

**FUJIFILM**

DIGITAL CAMERA

***FinePix 40i***

**digital**  
Tools for the imagination.



Getting Ready	<b>1</b>
Basic Photography	<b>2</b>
Advanced Features	<b>3</b>
Advanced Features Playback	<b>4</b>
Audio, Remote Control and PC Connection	<b>5</b>
Settings	<b>6</b>

**OWNER'S MANUAL**

This manual will show you how to use your FUJIFILM DIGITAL CAMERA FinePix40i correctly. Please follow the instructions carefully.

BB11754-200(1) **E**

# Warning

To prevent fire or shock hazard, do not expose the unit to rain or moisture.



CAUTION: TO REDUCE THE RISK OF ELECTRIC SHOCK,  
DO NOT REMOVE COVER (OR BACK).  
NO USER-SERVICEABLE PARTS INSIDE.  
REFER SERVICING TO QUALIFIED SERVICE PERSONNEL.

The graphical symbols are located on the bottom  
of the case.



This symbol is intended to alert the user to the presence of uninsulated “dangerous voltage” within the product’s enclosure that may be of sufficient magnitude to constitute a risk of electric shock to persons.



This symbol is intended to alert the user to the presence of important operating and maintenance (servicing) instructions in the literature accompanying the appliance.

## For customers in the U.S.A.

### FCC Statement

This device complies with part 15 of the FCC Rules. Operation is subject to the following two conditions:(1) This device may not cause harmful interference, and (2) this device must accept any interference received, including interference that may cause undesired operation.

## CAUTION

This equipment has been tested and found to comply with the limits for a Class B digital device, pursuant to Part 15 of the FCC Rules. These limits are designed to provide reasonable protection against harmful interference in a residential installation. This equipment generates, uses, and can radiate radio frequency energy and, if not installed and used in accordance with the instructions, may cause harmful interference to radio communications. However, there is no guarantee that interference will not occur in a particular installation. If this equipment does cause harmful interference to radio or television reception, which can be determined by turning the equipment off and on, the user is encouraged to try to correct the interference by one or more of the following measures:

- Reorient or relocate the receiving antenna.
- Increase the separation between the equipment and receiver.
- Connect the equipment into an outlet on a circuit different from that to which the receiver is connected.

— Consult the dealer or an experienced radio/TV technician for help.

You are cautioned that any changes or modifications not expressly approved in this manual could void your warranty.

## For customers in Canada

### CAUTION

This Class B digital apparatus complies with Canadian ICES-003.

Please read the Safety Notes (⇒P.110)  
and make sure you understand them  
before using the camera.

# Contents

Preface .....	6
Camera Features and Accessories .....	7
Nomenclature .....	8

## 1 Getting Ready

ATTACHING THE STRAP .....	11
SELECTING THE POWER SUPPLY .....	12
• Using Batteries .....	12
• Using the AC Power Adapter (sold separately) ...	14
LOADING THE SmartMedia™ .....	15
REMOVING THE SmartMedia™ .....	16
SWITCHING ON AND OFF .....	17
SETTING THE DATE AND TIME .....	19

## 2 Basic Photography

TAKING PICTURES (AUTO MODE) .....	21
• Number of Available Frames .....	26
USING AF/AE LOCK .....	27
FRAMING GUIDELINE FUNCTION .....	29
VIEWING YOUR IMAGES (PLAYBACK) .....	31
FAST FORWARDING IMAGES .....	32
PLAYBACK ZOOM .....	33
MULTI-FRAME PLAYBACK .....	34
ERASING SINGLE FRAME .....	35
4 USING A TV MONITOR .....	37

## 3 Advanced Features

ADVANCED FEATURES PHOTOGRAPHY .....	38
■ Photography mode specifications .....	38

### PHOTOGRAPHY MODE

PHOTOGRAPHY MENU OPERATIONS .....	39
SELECTING THE MODE .....	40
SETTING THE FILE SIZE AND QUALITY (COMPRESSION RATIO) .....	41
🌸 MACRO (CLOSE-UP) PHOTOGRAPHY ...	42
🕒 SELF-TIMER PHOTOGRAPHY .....	43
☑️ SETTING THE BRIGHTNESS (EXPOSURE COMPENSATION) .....	45
WB SETTING THE WHITE BALANCE .....	46
⚡ FLASH PHOTOGRAPHY .....	47
Auto Flash .....	47
👁️ Red-Eye Reduction .....	48
⚡ Forced Flash .....	48
🚫 Suppressed Flash .....	49
⚡ Slow Synchro .....	49
DIGITAL ZOOM .....	50
🎬 MOVIE .....	51

## 4 Advanced Features Playback

ADVANCED PLAYBACK .....	54
■ Playback mode menu .....	54
MOVIE PLAYBACK .....	55

### PLAYBACK MENU

🗑️ ERASING SINGLE-ALL FRAMES/ ALL AUDIO FILES/FORMAT .....	57
▶️ PLAYBACK (AUTOMATIC PLAYBACK) ...	59
📏 RESIZE .....	60
🔒 SETTING AND REMOVING SINGLE-FRAME PROTECTION .....	62
🔒 SETTING AND REMOVING PROTECTION FOR ALL FRAMES .....	64
HOW TO SPECIFY PRINT OPTIONS .....	66
📅 DPOF DATE SETTING .....	67
📏 DPOF TRIMMING .....	68
📅 DPOF FRAME SET/RESET .....	70
📅 DPOF SET ALL/RESET ALL .....	73
📁 CREATE INDEX .....	75

## 5 Audio, Remote Control and PC Connection

PREPARING TO USE THE AUDIO FUNCTIONS ...	77
USING AUDIO (REMOTE CONTROL TOP VIEW) .....	78
USING AUDIO (REMOTE CONTROL BOTTOM VIEW) .....	80
TAKING PHOTOGRAPHS USING THE REMOTE CONTROL .....	82
PLAYBACK USING THE REMOTE CONTROL ...	83
NOTES ON THE REMOTE CONTROL	
WARNINGS AND AUDIO .....	84

USB CONNECTION/DOWNLOADING DATA ...	85
USB CONNECTION/REPLACING SmartMedia™ ...	87

## 6 Setting

SET-UP MODE .....	88
FRAME NO. MEMORY .....	90
ADJUSTING THE LCD MONITOR BRIGHTNESS AND THE SPEAKER VOLUME ...	91

System Expansion Options .....	92
Optional Accessories Guide .....	93
Explanation of Terms .....	95
Notes on Using Your Camera Correctly .....	96
Notes on the Power Supply .....	97
• Applicable Batteries .....	97
• Notes on the Batteries .....	97
• Notes on Using the Battery Charger .....	98
• BC-NH Battery Charger Specifications .....	99
• Notes on Using the AC Power Adapter ...	99
Notes on the SmartMedia™ .....	100
Warning Displays .....	102
Troubleshooting .....	104
Specifications .....	107
Safety Notes .....	110
EC Declaration of Conformity .....	113

# Preface

## ■ Test Shots Prior to Photography

For particularly important photographs (such as weddings and overseas trips), always take a test photograph to check that the camera is functioning normally.

- Fuji Photo Film Co., Ltd. cannot accept liability for any incidental losses (such as the costs of photography or the loss of income from photography) incurred as a result of faults with this product.

## ■ Notes on Copyright

Unauthorized photographing of stage performance, entertainment or exhibits may be prohibited and violate copyright laws or other applicable laws. In addition, it may be an infringement of copyright to make a copy of music files, discs, tapes and other music materials without permission of the copyright owners.

## ■ Liquid Crystal

If the LCD monitor or LCD panel is damaged, take particular care with the liquid crystal in the monitor or panel. If any of the following situations arise, take the urgent action indicated.

- If liquid crystal comes in contact with your skin  
Wipe the area with a cloth and then wash thoroughly with running water and soap.
- If liquid crystal gets into your eye  
Flush the affected eye with clean water for at least 15 minutes and then seek medical assistance.
- If liquid crystal is swallowed  
Flush your mouth thoroughly with water. Drink large quantities of water and induce vomiting. Then seek medical assistance.

## ■ Notes on Electrical Interference

If the camera is needed to be used in hospitals or aircrafts, please note that this camera may cause interference to other equipment in the hospital or aircraft. For details, please check with the applicable regulations in that place.

## ■ Handling Your Digital Camera

This camera contains precision electronic components. To ensure that images are recorded correctly, do not subject the camera to impacts or shocks while an image is being recorded.

## ■ Trademark Information

- IBM PC/AT is a registered trademark of International Business Machines Corp. of the USA.
- iMac and Macintosh are registered trademarks of Apple Computer, Inc.
- Windows is a registered trademark of the Microsoft Corporation of the U.S. registered in the USA and other countries.  
Windows is an abbreviated term referring to the Microsoft Windows Operating System.
- SmartMedia is a trademark of Toshiba Corporation.
- Other company or product names are trademarks or registered trademarks of the respective companies. Trademark Information

## ■ Explanation of Color Television System

NTSC : National Television System Committee, color television telecasting specifications adopted mainly in the U.S.A., Canada and Japan.

PAL : Phase Alternation by Line, a color television system adopted mainly by European countries and China.

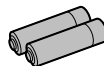
# Camera Features and Accessories

## Features

- Audio player functions
- Lightweight and compact aluminum-magnesium alloy body
- Quick startup and short interval between shots for fast and responsive operation
- Incorporates the newly developed Super CCD
- High ISO200 sensitivity and built-in automatic flash allows shooting in a wide range of conditions
- Seamless digital zoom function (1.88x for megapixel resolution and playback zoom function (up to 15x)
- Super EBC Fujinon lens
- Auto focus with macro function
- Manual photography mode that allows access to all the camera settings
- The Framing Guideline function makes it easy to compose perfectly balanced shots.
- Shoots movies (320 × 240 pixels with sound)
- Electrically operated lens cover
- 1.8-inch 110,000-pixel color LCD monitor
- USB socket for quick and easy image data downloading to a personal computer
- Conforms to the new standard for digital camera file system\*  
\* Design rule for Camera File system.
- Supports DPOF (Digital Print Order Format) for simple print ordering

## Accessories

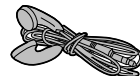
- AA-size Nickel Metal Hydride (Ni-MH) batteries HR-3UF (2)



- Remote control (1)



- Head phone (1)



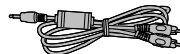
- Battery Charger BC-NH(1)



- Hand Strap (1)



- A/V Cable (approx. 1.5m (4.9 ft.), mini-plug (2.5mm dia.) to pin-plug cable) (1)



- Interface Set (1)

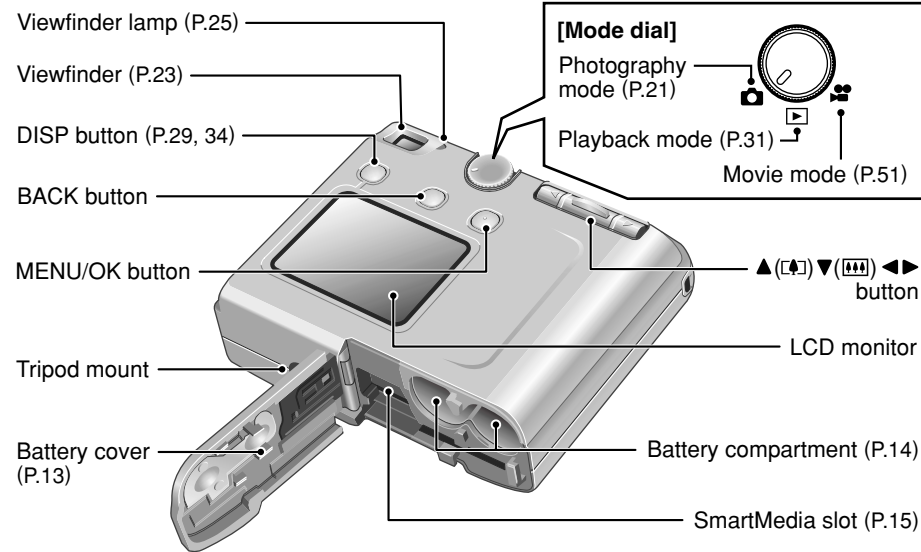
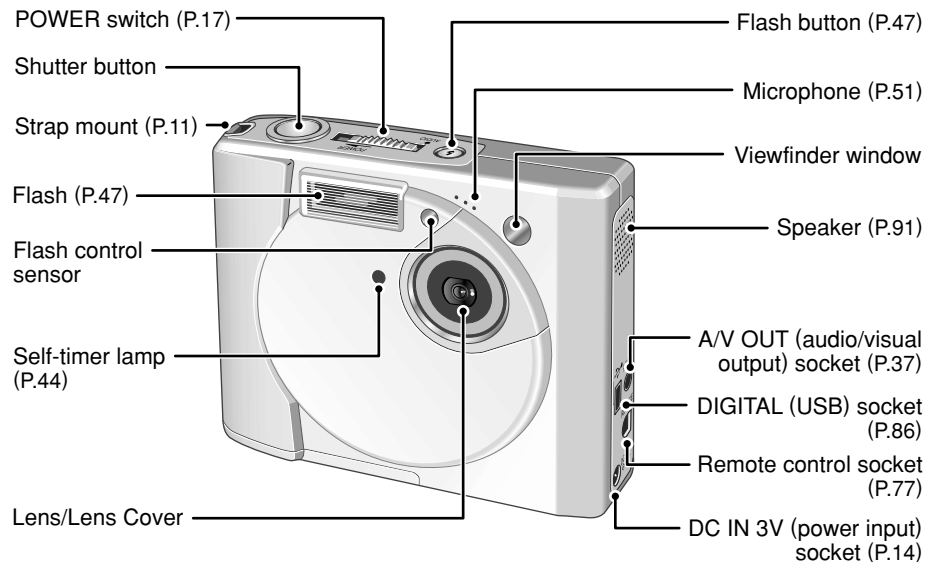
- CD-ROM (1)
- Special USB Cable (1)
- Quick Start Guide (1)
- RealJukebox plus Quick Start Manual (1)
- MacMP3 Limited Edition Installation Guide (1)
- Serial No. Card (1)

- Owner's Manual (this manual) (1)

- Audio Operations Guide (1)

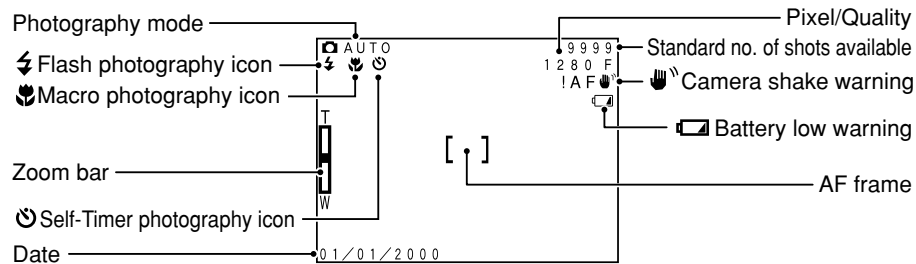
# Nomenclature

\* Refer to the pages in parentheses for more details.

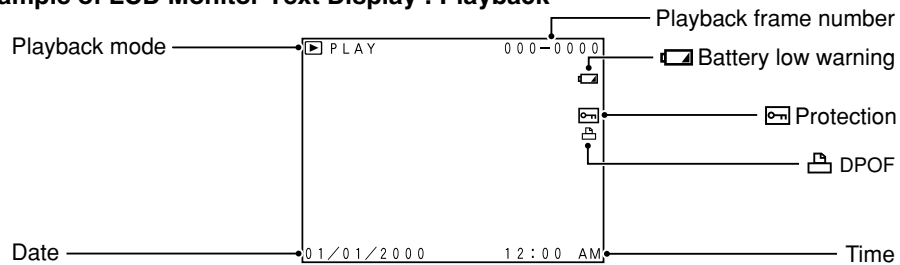


## Nomenclature

### Example of LCD Monitor Text Display : Shooting



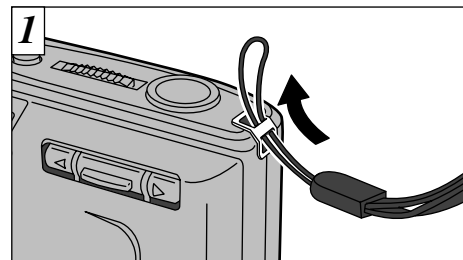
### Example of LCD Monitor Text Display : Playback



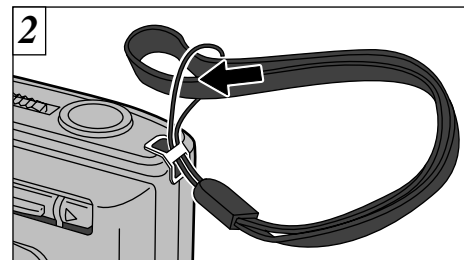
\* The above screen shows the NTSC model. The date order differs in the PAL model (day. month. year).  
Some items are displayed depending on the camera mode and photography conditions.

## 1 Getting Ready

## ATTACHING THE STRAP



Pass the loop of thin cord on the end of the strap through the strap mount.



Then pass the other end of the strap through the loop of thin cord and pull the strap tight.

1

## SELECTING THE POWER SUPPLY

### ■ Using Batteries

The FinePix40i takes 2 nickel-metal hydride (Ni-MH) or Ni-Cd batteries. The two batteries used should both be of the same type.

Lithium or manganese batteries should not be used at all as they emit heat and can damage the camera.

#### ◆ Batteries that Can Be Charged ◆

- AA-size Ni-MH batteries  
Fujifilm HR-3UF: 2 (supplied with the camera or sold separately)
- AA-size Ni-Cd batteries  
Fujifilm KR-3UF: 4 (sold separately)

Attempting to charge batteries other than those specified for use with the charger (such as manganese, alkaline or lithium batteries) can cause the batteries to burst or leak. This could result in a fire or injury and consequent damage to the surroundings.

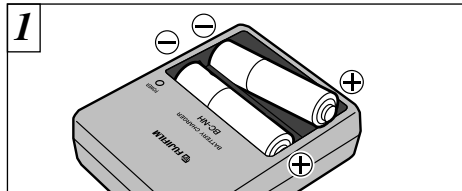
\*See P.108 for information on the number of shots that can be taken using batteries.

⚠ Alkaline batteries should only be used in an emergency. Note the following when using alkaline batteries:

- The battery terminals should be wiped clean with a clean, dry cloth.
- The number of available shots and the audio playback times are limited. The number of available shots and the audio playback times vary depending on the battery brand and the ambient temperature. At temperatures of +5°C (+40°F) and below, it may not be possible to take pictures or play back music. The lens cover may also fail to open or close fully.
- Because you are using the FinePix40i with the LCD monitor switched off, the power cuts out without a remaining battery low warning being displayed (if the FinePix40i is used with the LCD monitor switched off at temperatures of +20°C (+68°F) and above).

Number of available shots: About 30

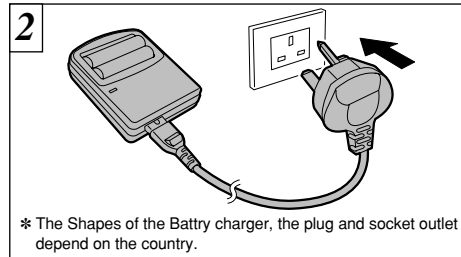
Available audio playback time: About 100 minutes



1 Load the rechargeable batteries into the battery charger as indicated on the label.

⚠ Ni-MH batteries are not fully charged at shipment and must be charged before being used. Newly purchased batteries or batteries that have been left unused for an extended period may not be fully charged. (This is indicated by the immediate display of the battery low warning or a low number of available shots.) This is a normal characteristic of the batteries and does not indicate a fault. Repeatedly charging and using the batteries 3 or 4 times will restore them to a normal condition.

⚠ If the terminals of nickel-metal hydride batteries are soiled, it may not be possible to charge them. To avoid possible problems, clean the battery terminals and charger terminals with a clean, dry cloth. (Especially the first time you charge the batteries, you should clean the battery terminals and charger terminals and then insert the batteries into the charger and remove them several times before you start charging.)



2 \* The Shapes of the Battery charger, the plug and socket outlet depend on the country.

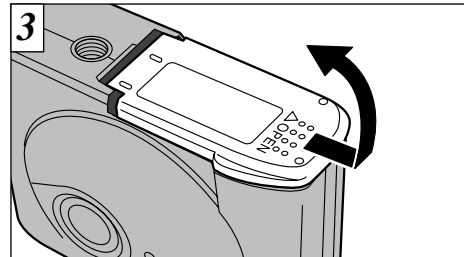
Plug the charger into a power outlet to begin charging. Battery charging will be completed in about 13 hours, but the power lamp remains lit. Unplug the battery charger from the power outlet when it is not in use.

⚠ Fully discharged Ni-MH batteries take approximately 13 hours (1,600 mAh) to recharge. KR-3UF Ni-Cd batteries take approximately 8 hours to recharge. Shorter charging times can be achieved using the Ni-MH/Battery Charger BCH-NH (P.93).

⚠ If you recharge Ni-MH or Ni-Cd batteries before they are fully depleted, this results in the "memory effect"\*, which causes the battery low warning to appear sooner. To restore the batteries to their normal condition, use up all the charge in the batteries before recharging them.

\* Memory effect: A phenomenon whereby the battery properties are such that its capacity is lower than the nominal amount.

⚠ Do not use old and new batteries together.



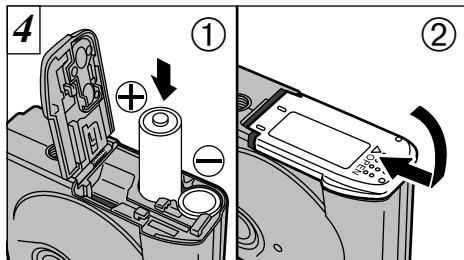
3 Slide the battery cover out to open it.

⚠ Do not apply excessive force to the battery cover.

⚠ Always switch the camera off when replacing the batteries. If the camera is left switched on, the camera settings may revert to the factory default settings.

⚠ If the AC power adapter has been connected or the batteries have been installed for about half a day or longer, the camera settings will be retained for about half a day after the AC power adapter has been disconnected and the batteries have been removed. Check the date setting after you replace the batteries.

## SELECTING THE POWER SUPPLY



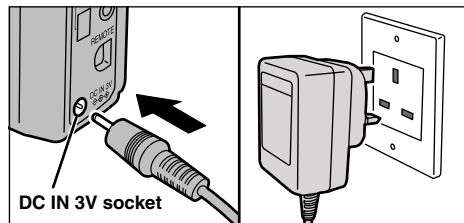
① Install the batteries with the correct polarity as shown.

② Close the battery cover.

⚠ Take care not to drop the batteries when opening and closing the battery cover.

⚠ See P.97 for notes on using other power supplies.

### ■ Using the AC Power Adapter (sold separately)



The special AC Power Adapter AC-3V can be used to avoid power loss during photography, playback or image downloading (using the USB connection) due to depleted batteries.

Check that the camera is switched off and then plug the AC power adapter connector into the "DC IN 3V socket" on the camera. Then plug the AC power adapter into the power outlet.

- ⚠ You cannot charge the batteries by connecting the AC power adapter.
- ⚠ The socket-outlet shall installed near the equipment and shall be easily accessible.
- ⚠ The shapes of the plug and socket-outlet depends on the country of use.
- ⚠ Using AC power adapters other than the AC-3V could damage the camera.
- ⚠ See P.99 for more information on the AC power adapter.

## LOADING THE SmartMedia™

### SmartMedia™

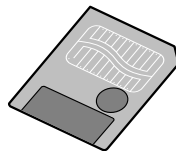
#### ■ Only use 3.3V SmartMedia.

##### <For Camera>

MG-4S (4MB), MG-8S (8MB), MG-16S (16MB), MG-32S (32MB), MG-64S (64MB)

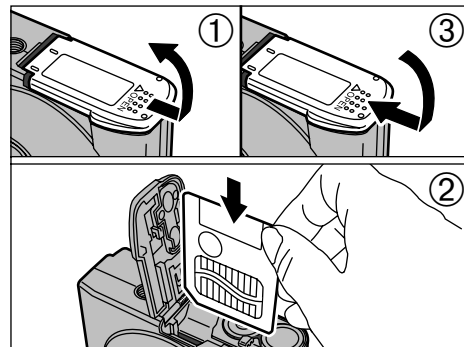
##### <For Audio> SmartMedia with ID

MG-16SW (16MB), MG-32SW (32MB), MG-64SW (64MB)



- ⚠ Images cannot be recorded or erased if a write-protect sticker is affixed to the SmartMedia.
- ⚠ Operation of this camera is only guaranteed when it is used with Fujifilm SmartMedia.
- ⚠ Some 3.3V SmartMedia are labelled as "3V" cards.
- ⚠ SmartMedia with ID are labelled as "ID" cards.
- ⚠ See P.100 for more information on SmartMedia.

A SmartMedia with ID is needed to use the audio function.



① Check that the camera is turned off. Then turn the camera so that the battery cover is upwards and slide the cover open.

② Push the SmartMedia firmly into the SmartMedia slot as far as it will go.

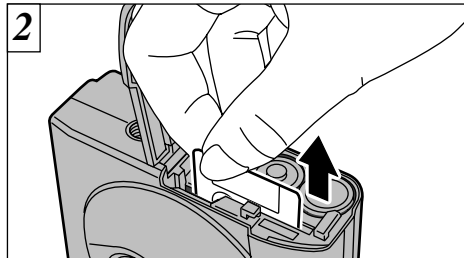
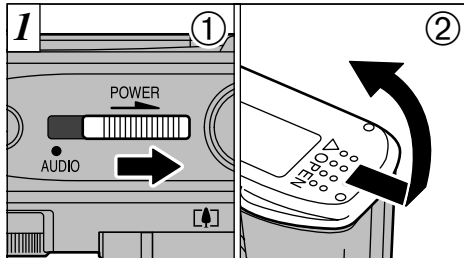
③ Close the battery cover.

⚠ If you open the battery cover while the camera is switched on, the camera is automatically switched off to protect the SmartMedia.

⚠ The SmartMedia will not slide fully into the slot if it is inserted facing the wrong way. Be careful not to apply undue force to the SmartMedia.



## REMOVING THE SmartMedia™



- ① Check that the indicator in the viewfinder is green and then switch the camera off.
- ② Always turn the camera so that the battery cover is upwards before sliding the cover open.

Taking care that the batteries do not fall out of the camera, grasp the SmartMedia and pull it out.

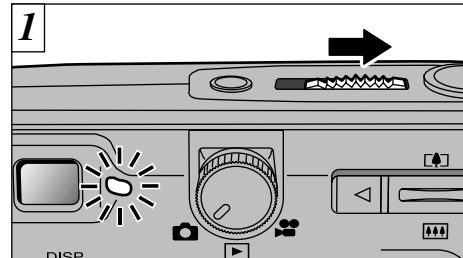
! To protect the SmartMedia, always store it in the special anti-static case.

### ◆ Printing Images and Downloading Images to a Personal Computer ◆

- See P.66, 92 for information on printing images.
- See P.85-87 for information on downloading images to a personal computer.

Never open the Battery cover while the camera is switched on. This could destroy the image data or damage the SmartMedia itself.

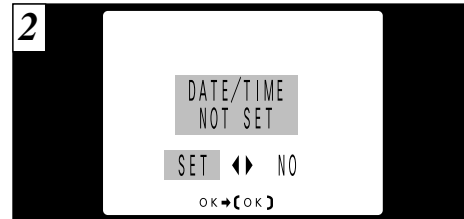
## SWITCHING ON AND OFF



To turn the camera on or off, slide the POWER switch to "POWER". When you turn the camera on, the viewfinder lamp turns green.

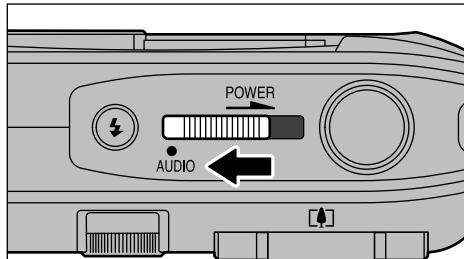
- ! If you switch the camera on when the Mode dial is set to "📷" or "📷", the lens cover opens and the lens moves out. For this reason, take care to avoid touching the lens when you switch the camera on.
- ! Switch the camera on before attempting to use the camera in any way.

When the Auto Power Off function is enabled (→P.88), the camera automatically switches itself off if it is left on and unused for about two minutes.



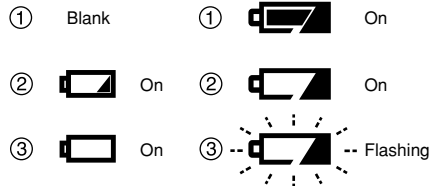
If the date and time settings have been cleared, a confirmation screen appears. To set the date and time, use the "◀" or "▶" button to select "SET" and then press the "MENU/OK" button (→P.19).

## SWITCHING ON AND OFF



Note that this only turns the camera on for audio playback with the remote control connected.

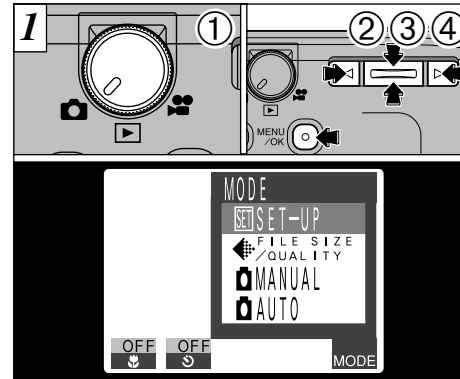
### LCD monitor    Remote control LCD panel



Check the battery level warning when you switch the camera on.

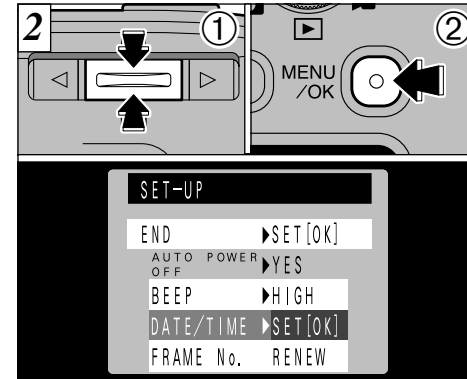
- ① The battery is fully charged.  
(This icon is only displayed on the LCD panel for 3 seconds after you switch the camera on.)
  - ② The battery charge is too low. Fully charged batteries should be installed as the power will run out shortly.
  - ③ There is no charge at all in the batteries. The icon disappears immediately and camera operation stops. Install fully charged batteries.
- ⚠ The battery charge level can only be checked on the remote control LCD panel when the remote control is installed (→P.78).

## SETTING THE DATE AND TIME



- ① Set the Mode dial to “CAMERA”.
- ② Press the “MENU/OK” button to display the menu on the LCD monitor.
- ③ Use “◀” or “▶” to select “MODE” and then use “▲(CAM)” or “▼(CAM)” to select “SET-UP”.
- ④ Press the “MENU/OK” button.

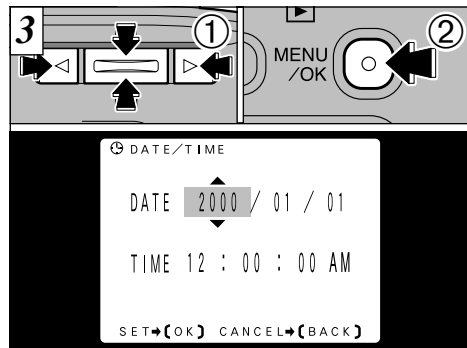
If the date and time settings are cleared when you switch the camera on, a confirmation screen appears. If you chose to reset the date and time, proceed from step ③.



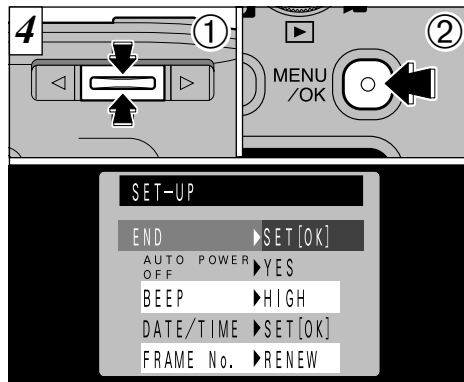
- ① Use “▲(CAM)” or “▼(CAM)” to select “DATE/TIME”.
- ② Press the “MENU/OK” button.

- ⚠ See P.88 for more information on the items in the “SET” (SET-UP) mode menu.
- ⚠ If the AC power adapter has been connected or the batteries have been installed for about half a day or longer, the date and time settings will be retained for about half a day after the AC power adapter has been disconnected or the batteries have been removed.

## SETTING THE DATE AND TIME



- ① Use “◀” or “▶” to select the item you want to set (year, month, date, hour or minute) and then use “▲( [ ] )” or “▼( [ ] )” to correct the setting.
- ② When you have corrected the setting, press the “MENU/OK” button.
- ⚠ Hold down the “▲( [ ] )” or “▼( [ ] )” button to scroll the numbers up or down continuously.
- ⚠ When the displayed time passes “12:00:00”, the camera automatically switches between AM and PM.
- ⚠ PAL model : 2000.01.01.
- ⚠ You cannot specify the time in seconds. To set the time precisely, press the “MENU/OK” button when the time reaches 0 (zero) seconds.

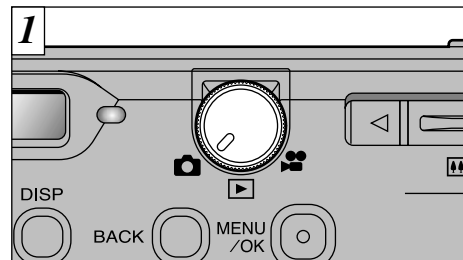


Return to the SET-UP menu.

- ① Press “▲( [ ] )” or “▼( [ ] )” to select “END”.
- ② Press the “MENU/OK” button to end the setup procedure.

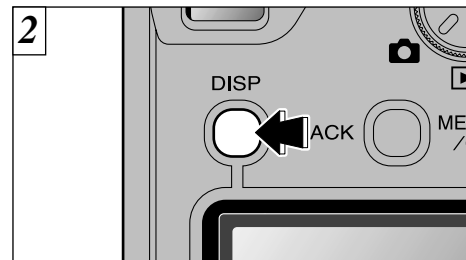
## 2 Basic Photography

## TAKING PICTURES (AUTO MODE)



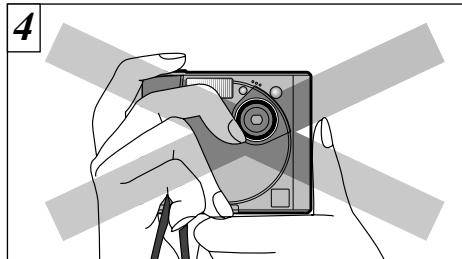
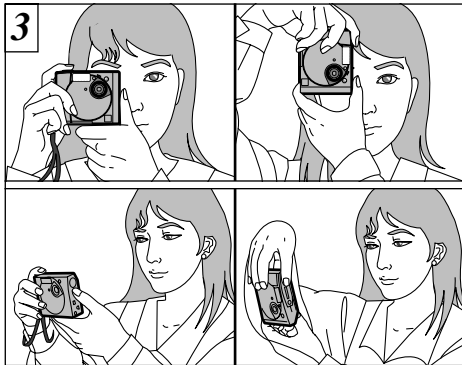
Set the Mode dial to “📷”.

- ⚠ You can photograph subjects at distances of 50 cm (1.6 ft.) to infinity. For subjects closer than 50 cm, use Macro photography (→P.42).
- ⚠ See P.82 for more information on taking pictures using the remote control.



To take pictures using the viewfinder (excluding Macro Photography), To use the LCD monitor to take photographs, press the “DISP” button to switch the LCD monitor on (→P.29).

## TAKING PICTURES (AUTO MODE)

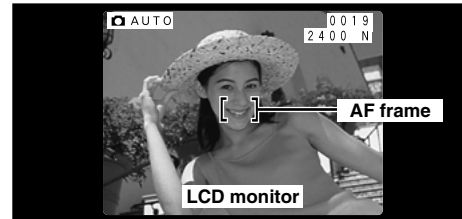
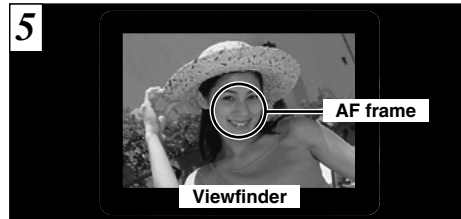


Be careful to ensure that the lens, microphone and flash control sensor are not obscured by your hands or the camera strap.

Loop the strap over your wrist, brace your elbows firmly against your body and hold the camera with both hands.

- ❗ Check that the lens is clean. If it is dirty, clean the lens as described on P.96.
- ❗ The image will be blurred if the camera moves when you take the picture (camera shake).
- ❗ When you are shooting in low-light conditions, use the flash (→P.47) or a tripod to prevent blurred images due to camera shake.

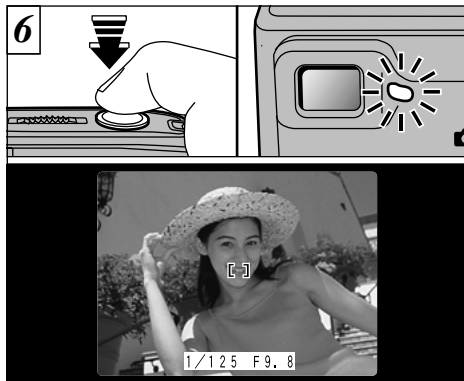
- ❗ The camera may not be able to take successful pictures if your fingers or the strap are in the way.



Using the viewfinder or LCD monitor, frame your shot so that the subject fills the entire AF (Auto Focus) frame.

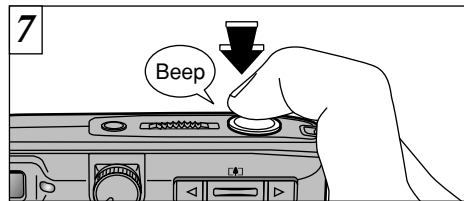
- ❗ If your subject is not in the center of the picture, use AF lock to take the picture (→P.27).
- ❗ For dimly lit scenes where the subject is difficult to see in the LCD monitor, you should use the viewfinder.
- ❗ If the image on the LCD monitor is difficult to see, adjust the monitor brightness.

## TAKING PICTURES (AUTO MODE)



Press the shutter button down half way. The image is focused when the AF frame on the LCD monitor becomes smaller and the shutter speed and aperture setting appear (and the green viewfinder lamp stops blinking and remains lit).

- ⚠ When you press the shutter button down halfway, the video image on the LCD monitor freezes briefly. However, this is not the image that is recorded.
- ⚠ If it is too dark for the camera to focus, move at least 1.5 m (4.8 ft.) away from your subject before taking the picture.



To take the picture, press the shutter button down fully without lifting your finger off it. The camera beeps and takes the picture, and the data is then recorded.

- ⚠ If you press the shutter button down fully in one motion, the shot is taken without the AF frame changing.
- ⚠ When you take a picture, the viewfinder lamp lights orange (camera not ready) before switching back to green to indicate that the camera is again ready for shooting.
- ⚠ The LCD monitor may go dark briefly. This is normal and does not indicate a fault.
- ⚠ The viewfinder lamp flashes orange while the flash is charging.
- ⚠ Since the amount of image data recorded is not fixed and varies depending on the subject (level of image detail, etc.), the number of available shots may not decrease after the image is recorded, or may decrease by 2.
- ⚠ See P.102 for information on the warning displays.

## Viewfinder Lamp Display

Color	Status	Meaning
Green	Lit	Ready to shoot
	Flashing	AF/AE in progress or camera shake warning. Recording to SmartMedia (the next picture can be taken)
Orange	Lit	Image being recorded onto the SmartMedia (the next picture cannot be taken)
	Flashing	Flash charging
Red	Flashing	<ul style="list-style-type: none"> <li>● SmartMedia warning</li> <li>● No SmartMedia loaded, SmartMedia not formatted, incorrect format, write-protect sticker used, SmartMedia full, SmartMedia error</li> <li>● Battery charging error</li> <li>● Lens operation error</li> <li>*When the LCD monitor is switched on, details of the warning are displayed on the monitor (→P.102).</li> </ul>

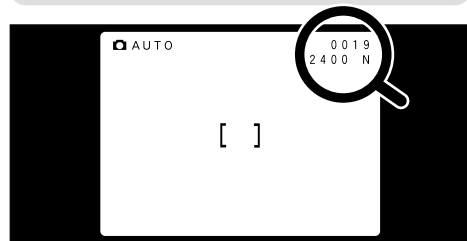
## Subjects Not Suitable for Autofocus

Though the FinePix40i uses an accurate autofocus mechanism, it may have difficulty focusing or not be able to focus at all for the types of subject and situation listed below. In such cases, the image may be out of focus.

- Very shiny subjects such as a mirror or car body.
- Subjects photographed through glass.
- Subjects that do not reflect well, such as hair or fur.
- Subjects with no substance, such as smoke or flames.
- When the subject is distant and dark.
- When there is very little contrast between the subject and the background (such as white walls or subjects dressed in the same color as the background).
- When there are objects in front of or behind the subject (such as an animal in a cage or a person in front of a tree).
- Subjects moving at high speed.

## TAKING PICTURES (AUTO MODE)

### Number of Available Frames



The number of available shots is displayed on the LCD monitor in the position shown in the figure at left.

- See P.41 for information on changing the File size and Quality setting.
- At shipment, the default settings are 2400 × 1800 (for File Size) and NORMAL (for Quality).

### Standard number of shots per SmartMedia

The number of shots that can be recorded onto a SmartMedia card varies slightly depending on the type of subject. Also, the difference between the standard number of shots and the actual number of available shots increases for SmartMedia with a higher capacity.

File Size	2400 × 1800			1280 × 960		640 × 480
	FINE	NORMAL	BASIC	FINE	NORMAL	NORMAL
Image Data Size	Approx. 1700KB	Approx. 803KB	Approx. 328KB	Approx. 612KB	Approx. 312KB	Approx. 87KB
MG-4S (4MB)	2	4	11	6	12	44
MG-8S (8MB)	4	9	23	12	24	89
MG-16S/SW (16MB)	9	19	47	25	49	165
MG-32S/SW (32MB)	18	38	94	50	99	331
MG-64S/SW (64MB)	36	77	189	101	198	663

\*The numbers of available shots are shown for formatted SmartMedia.

## USING AF/AE LOCK



In a shot with this type of composition, the subjects (two people in this case) are not in the AF frame. If the shot is taken at this point, the subjects will not be in focus.



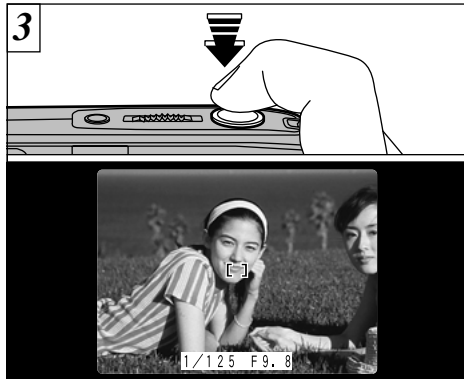
Move the camera slightly so that one of the subjects in the AF frame.

- The displayed screens are those shown on the LCD monitor.
- See P.21 for information on taking pictures using the LCD monitor.

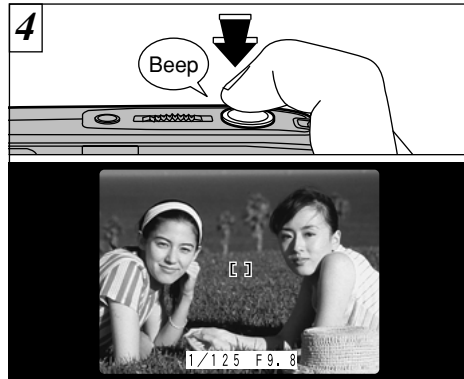
### ◆ AF (AUTOFOCUS) /AE (AUTOEXPOSURE) LOCK◆

On the FinePix40i, pressing the shutter button down half way locks the focus and exposure settings (AF and AE lock). If you want to focus on a subject that is not centered in the frame or change the picture composition after the exposure is set, you can obtain good results by changing the composition after the AF and AE settings are locked.

## USING AF/AE LOCK



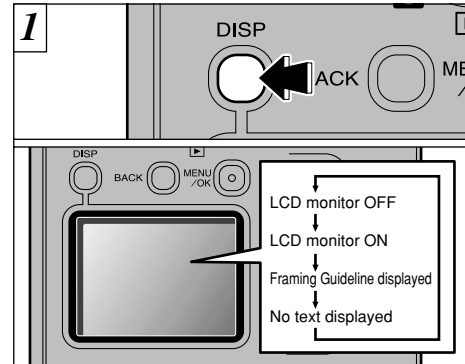
Keep the shutter button held down half way (AF and AE locked) and check that the AF frame is smaller and that the shutter speed and aperture settings are displayed (and that the green viewfinder lamp has stopped blinking and remains lit).



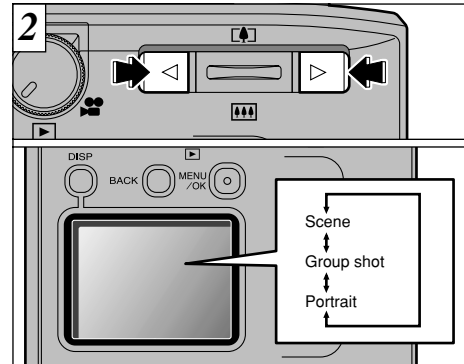
With the shutter button still held down half way (AF lock), move the camera back to the original image and press the shutter button down fully.

- ⚠ You can reapply the AF/AE lock as many times as you like before releasing the shutter.
- ⚠ The AF/AE lock operates in all photography modes and can be used to ensure excellent results.

## FRAMING GUIDELINE FUNCTION






In Auto mode, the LCD monitor display changes each time you press the “DISP” button. Press the “DISP” button to display the “Framing Guideline”.



Use the “◀” and “▶” buttons to select one of the three framing guidelines. The framing guideline help you to compose your shot when you are taking pictures using the LCD monitor.

- ⚠ The framing guideline is not recorded on the image.

## FRAMING GUIDELINE FUNCTION

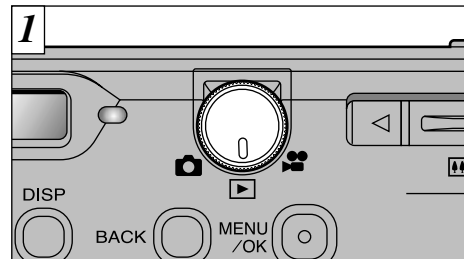
Scene	Group Shot	Portrait (Vertical shot frame)
<p>Use this frame when you want to position your main subject in center of the frame or when you want to align your shot with the horizon. This is the most effective frame for monitoring the size and balance of your subject when the shot involves motion.</p> 	<p>Use this frame when you are shooting groups of 2 or more people. By composing the shot so that your subjects are as large as possible within the frame, the photograph will clearly show their facial expressions.</p> 	<p>Use this frame for portrait photography. Fit the subject's face into one of the 3 frames to shoot a close-up portrait (large frame), a head and shoulders shot (middle frame), or a half-body shot (small frame). When the distance to the subject is 50 cm (1.6 ft.) or less, use Macro mode.</p> 

! The lines in the scene frame roughly divide the recorded pixels into three equal parts horizontally and vertically. When the image is printed, the resulting print may be shifted slightly from the scene frame.

### ◆ Important ◆

Always use the AF/AE lock to compose your picture. Failing to use the AF/AE lock may result in the image being out of focus.

## VIEWING YOUR IMAGES (PLAYBACK)

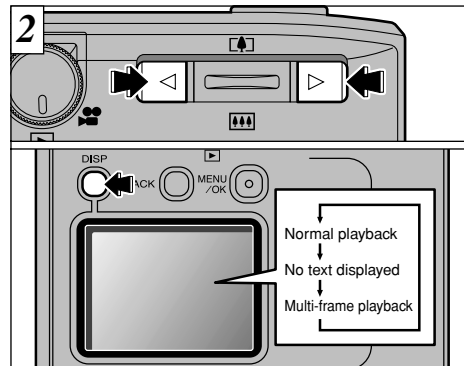


Set the Mode dial to "▶".

- ! When you set the Mode dial to "▶", the last image shot is displayed.
- ! If image on the LCD monitor is difficult to see, adjust the LCD monitor brightness (→P.91).

### ◆ Images That Can be Viewed on the FinePix40i ◆

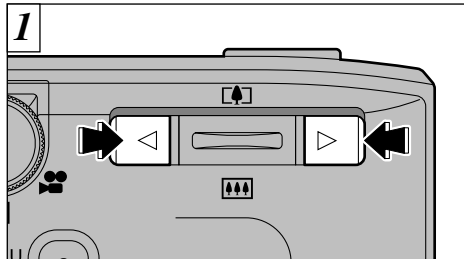
You can use this camera to view images recorded on an FinePix40i or images recorded onto a 3.3V SmartMedia using a Fujifilm FinePix series, MX series and DX series digital camera.



You can use "▶" and "◀" button to move forward and backward respectively through your images. The LCD monitor display changes each time you press the "DISP" button.



## FAST FORWARDING IMAGES



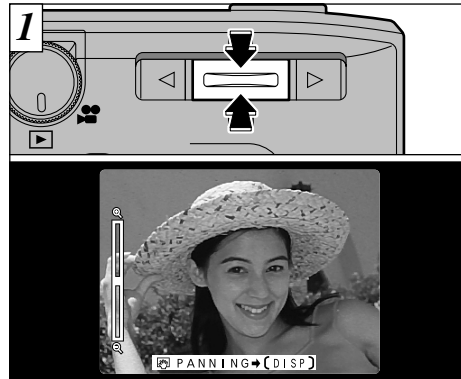
1 You can fast forward through the frames by holding down “◀” or “▶” button for about 3 seconds during playback.



2 During fast forward, 3 frames are shown together in miniature on the LCD monitor. When you stop fast forward, the image enclosed in the frame is displayed on the monitor as a single image.

! A progress bar is displayed to show the approximate playback position on the SmartMedia.

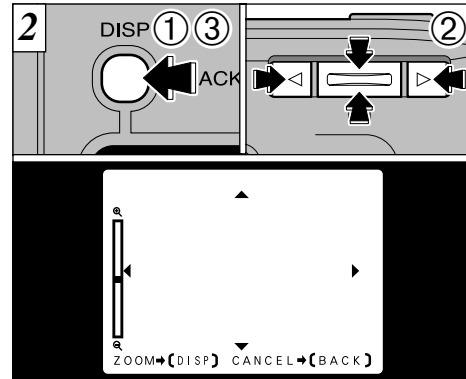
## PLAYBACK ZOOM



1 Pressing “▲( [▲] )” and “▼( [▼] )” button during playback zooms in and out on (enlarges and reduces) the still image respectively. When you use this function, a zoom bar is displayed.

• **Zoom scales:** 2400 × 1800-dot images: Max 15×  
1280 × 960-dot images: Max 8×  
640 × 480-dot images: Max 4×

! Pressing “◀” or “▶” during zooming cancels zooming and moves to the next image.



After you have zoomed in on your image,

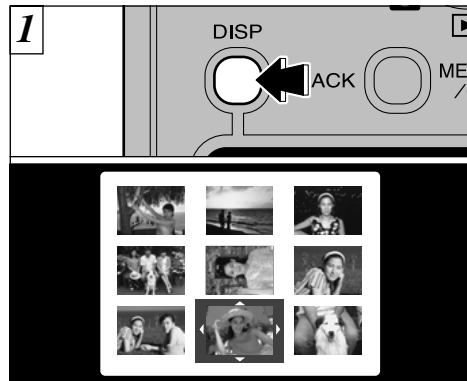
① press the “DISP” button.

② You can use the “◀▶” and “▲▼( [▲] [▼] )” buttons to zoom in on different parts of the image.

③ You can return to zoom mode by pressing the “DISP” button again.

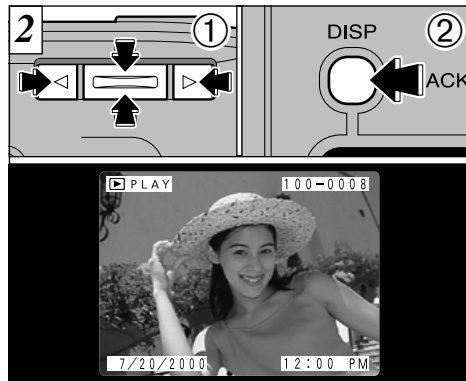
! Press the “BACK” button to return to normal unscaled display.

## MULTI-FRAME PLAYBACK



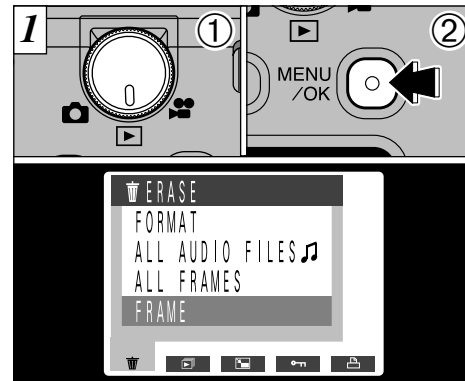
Pressing the “DISP” button twice switches to the multi-frame (9-frame) display.

- ! The LCD monitor text display disappears after approximately 3 seconds.
- ! Playback zoom cannot be used with multi-frame playback.



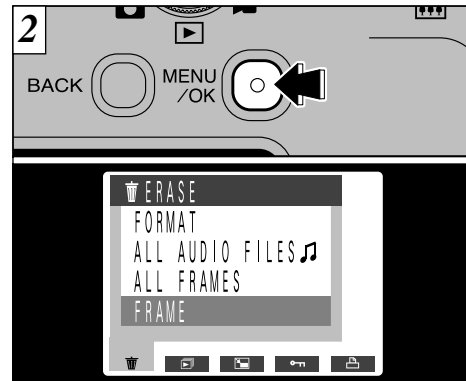
- ① Use the “◀” and “▶” buttons to move the cursor (the orange outline) to the desired frame. Pressing “▲(□▶)” or “▼(◀□)” repeatedly switches to the previous or next page.
  - ② You can enlarge the selected image by pressing the “DISP” button again.
- ! Multi-frame playback is particularly useful for selecting images for single-frame erase, single-frame protect, Resize, DPOF frame specification or DPOF confirmation and cancellation.

## ERASING SINGLE FRAME



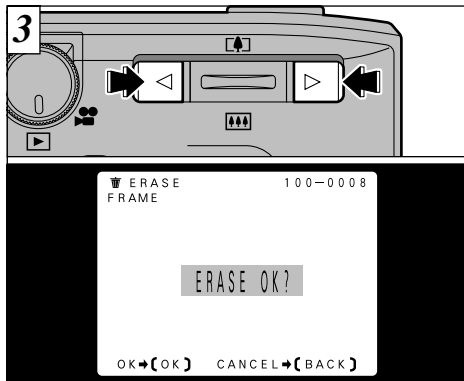
- ① Set the Mode dial to “▶”.
- ② Press the “MENU/OK” button to display the Menu screen on the LCD monitor.

- ! See P.57 for more information on the Erasing all frames and Formatting.
- ! Multi-frame playback (→P.34) is an easy way to select images to be protected.



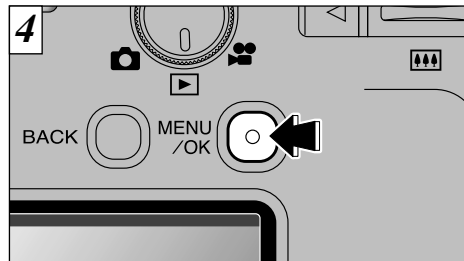
“🗑️” Select “FRAME” in the ERASE menu and press the “MENU/OK” button.

## ERASING SINGLE FRAME



Press “◀” or “▶” button to display the image to be erased.

❗ To cancel single-frame erase, press the “BACK” button to return to the menu. To exit the menu screen, press the “BACK” button again.

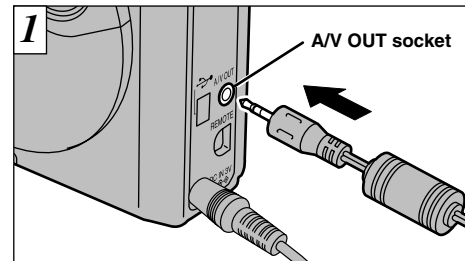


Press the “MENU/OK” button to erase the displayed image. When erasing is complete, the next image appears and the “ ERASE OK?” message is displayed.

- ❗ If “ PROTECTED FRAME” is displayed, the image protection must be removed to erase the image (→P.62).
- ❗ If the “ DPOF SPECIFIED. ERASE OK?” message is displayed, DPOF is specified. When you press the “MENU/OK” button, the image is erased and the DPOF settings are updated.

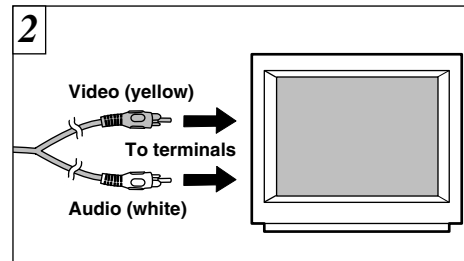
To continue erasing images, repeat the procedure from step .

## USING A TV MONITOR



Switch off the camera and TV. Plug the A/V cable (accessory) into the A/V OUT (audio-visual output) socket on the camera.

- ❗ If you connect the A/V cable during playback, you will not hear the sound from the TV.
- ❗ If you disconnect or reconnect the A/V cable while the power is switched on, the sound may not be output correctly.
- ❗ If there is a power outlet available, connect the AC-3V AC Power Adapter.



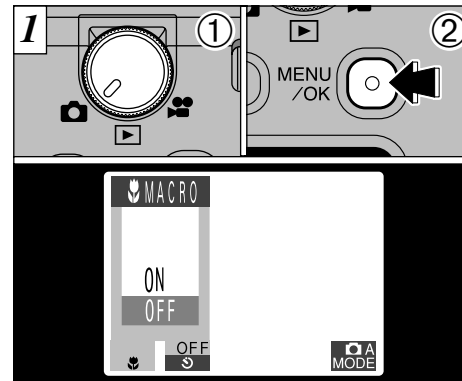
Plug the other end of the cable into the audio/video input socket on the TV. Then switch the camera and TV on and take pictures or play back images as you would normally.

- ❗ If your TV has stereo audio input sockets, plug the cable into the left (white) socket.
- ❗ Refer to the instructions provided with your TV for more information on audio and A/V input for your TV.

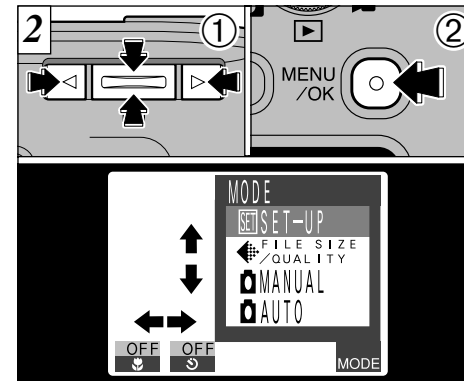
The Advanced Photography section introduces a range of camera functions that you can access by setting the Mode dial to “” or “”.

### ■ Photography mode specifications

Mode dial	Photography Mode	Accessible menu settings	Factory default	Flash Photography (→P.47)	Digital Zoom (→P.50)
Still Images	A Auto (→P.40)	Macro photography (→P.42) Self-Timer photography (→P.43) Mode (→P.40)	OFF OFF —	○	○
	M Manual (→P.40)	Macro photography (→P.42) Self-Timer photography (→P.43) Setting the Brightness (→P.45) Setting the White Balance (→P.46) Mode (→P.40)	OFF OFF 0 AUTO —		
Movie (→P.51)	—	—	—	×	○

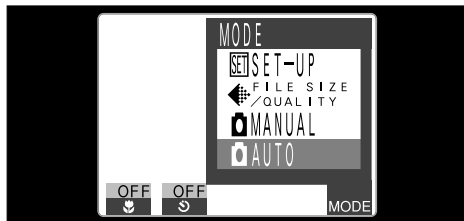


- ① Set the Mode dial to “”.
- ② Press the “MENU/OK” button to display the menu on the LCD monitor.



- ① Use “◀” or “▶” to select the menu item and then use “▲( [↑] )” or “▼( [↓] )” to change the setting.
- ② Press the “MENU/OK” button to confirm the setting.

## PHOTOGRAPHY MODE SELECTING THE MODE



Select **A** AUTO, **M** MANUAL, **FILE SIZE/QUALITY** or **SET-UP** mode.

### **A** AUTO

This is the easiest mode for taking pictures and can be used in a wide range of conditions.

\*This mode allows you to specify the **flower** (→P.42) and **clock** (→P.43) settings.

### **M** MANUAL

Manual mode allows you to specify the best combination of settings for your shot.

\*This mode allows you to specify the **flower** (→P.42), **clock** (→P.43), **red square** (→P.45) and **WB** (→P.46) settings.

### **FILE SIZE/QUALITY**

Use this mode to set the “FILE SIZE/QUALITY” setting (→P.41).

### **SET-UP**

This mode allows you to change the photography settings (→P.88).

## PHOTOGRAPHY MODE SETTING THE FILE SIZE AND QUALITY (COMPRESSION RATIO)

You can select any combination of 3 file size settings and 3 quality (compression ratio) settings according to the type of shot you want to take.

### To produce high-quality prints

Use the largest available file size with a low compression ratio (FINE or NORMAL). However, because this increases the amount of data in each frame, the remaining number of available frames is reduced.

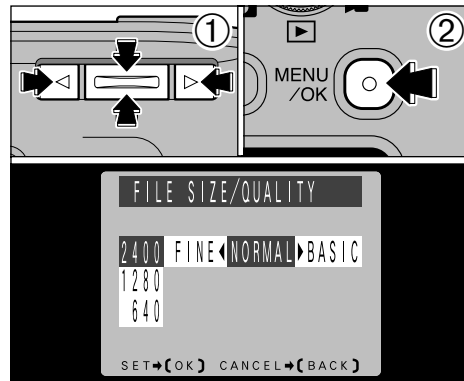
### For use on the Internet

These images are intended to be viewed on a personal computer screen, so you should use a small file size (640 × 480). Because this reduces the amount of data in each frame, the remaining number of available frames is increased.

### Quality (compression ratio)

Choose [FINE] for better image quality or [BASIC] to increase the number of available prints.

In most cases, the [BASIC] setting provides more than adequate image quality.

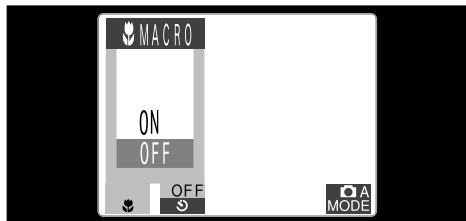


① Use “▲(□)” or “▼(□)” to change the file size setting and “◀” or “▶” to change the quality setting.


② Press the “MENU/OK” button to confirm the setting.

⚠ There are 6 combinations of file size and quality settings in total (→P.26).

⚠ Images can be resized after shooting (→P.60).



Macro photography can be selected in either “**A**” or “**M**” photography mode.

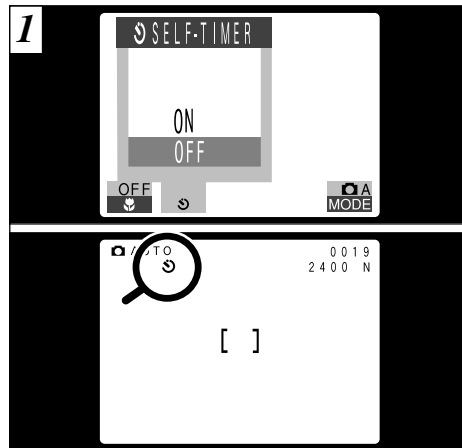
Selecting macro mode allows you to take close-up pictures of subjects at distances of between 6 cm to 50 cm (2.3 in. to 1.6 ft.) from the camera. Select the “ON” setting and then press the “MENU/OK” button. The “” icon appears on the LCD monitor.


- ! The LCD monitor is automatically switched on.
- ! When shooting in dark conditions, use a tripod to prevent camera shake.

Also, set the flash functions according to the given circumstances (→P.47).

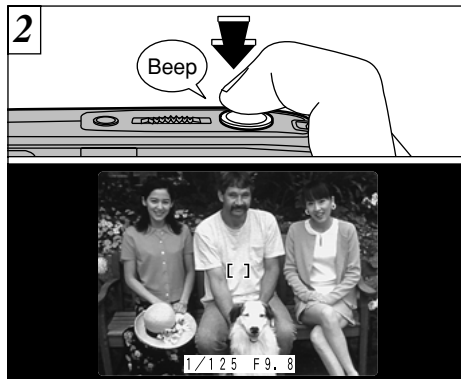
For subjects closer than 40 cm (1.3 ft.), the flash mode should be set to Suppressed Flash (→P.49).

If you use the viewfinder to take a picture in Macro mode, the field visible through the viewfinder does not match the field actually photographed because the viewfinder and lens are in different positions. Accordingly, you should use the LCD monitor to take pictures in Macro mode.



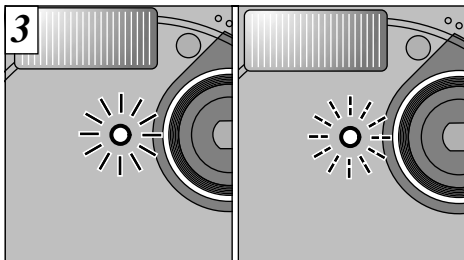
You can set the self-timer when the photography mode is set to “**A**” or “**M**”. When you select “ON”, the “” icon appears on the LCD monitor.

- ! You can also use the Framing Guideline Function (→P.29).

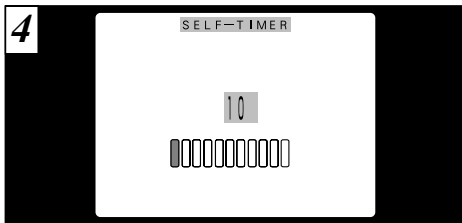


Position the AF frame over the subject and press the shutter button. The camera focuses on the subject in the frame and self-timer starts to run.

- ! You can also use the AF/AE lock (→P.27).
- ! Be careful not to stand in front of the camera when you press the shutter button as this can cause focusing or light metering errors.

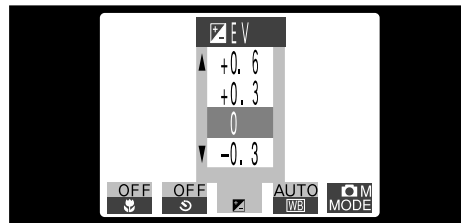


The self-timer lamp lights for 5 seconds and then blinks for 5 seconds, then the camera takes the picture.



The time until the shutter releases is shown as a countdown bar on the LCD monitor and LCD panel. Self-timer mode is automatically cancelled after each shot.

44 To stop the self-timer, once it has started running, press the "BACK" button.



You can set the brightness when the photography mode is set to "M". Use the Brightness setting to obtain the optimum image brightness (exposure) when the subject is much brighter or darker than the background.

- There are 11 compensation levels (–1.5 to +1.5 EV in approx. +0.3 EV increments). See P.95 for a definition of EV.

- The Brightness setting is disabled in the following situations:
  - When the flash is used in Auto or Red-eye Reduction mode
  - When dark scenes are shot in Forced Flash mode

### ◆ Subjects for Which Exposure Adjustment is Particularly Effective ◆

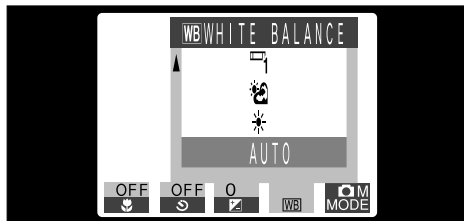
#### Positive (+) Compensation

- Copying of printed text (black characters on white paper) (+1.5 EV)
- Backlit portraits (+0.6 to +1.5 EV)
- Very bright scenes (such as snowfields and highly reflective subjects) (+0.9 EV)
- Shots made up predominantly of sky (+0.9 EV)

#### Negative (–) Compensation

- Spotlight subjects, particularly against dark backgrounds (–0.6 EV)
- Copying of printed text (white characters on black paper) (–0.6 EV)
- Scenes with low reflectivity, such as shots of pine trees or dark foliage (–0.6 EV)

\* Settings given in parentheses are a general guide.




You can set the white balance when the photography mode is set to "M".

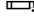
Change the white balance setting when you want to take a picture with the white balance fixed for the surroundings and lighting when the picture is taken.


In Auto mode, the correct white balance may not be obtained for subjects such as close-ups of people's faces and shots taken under a special light source. In such situations, select the correct white balance for the light source. See P.95 for more information on the white balance.

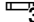
**AUTO** : Automatic adjustment  
(Shooting to show the ambience of the light source)

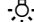
 : Shooting outdoors in fine weather

 : Shooting in shade

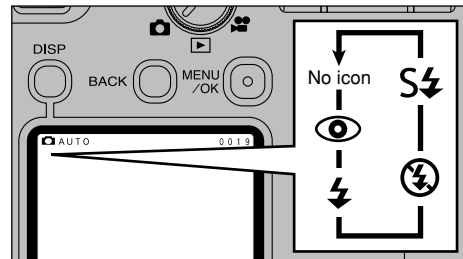
 : Shooting under "Daylight" fluorescent lamps

 : Shooting under "Warm White" fluorescent lamps

 : Shooting under "Cool White" fluorescent lamps

 : Shooting in incandescent light

\* The white balance setting is ignored when the flash is used. To achieve the desired effect in your shot, press the flash back down to suppress flash operation. (➔P.49)



You can choose from 5 flash modes to suit your shot. Each time you press the "⚡" flash button, the flash mode shown on the LCD monitor changes from Auto flash (no icon displayed) to "👁️" to "⚡" to "⚡" to "⚡". The last mode displayed is the selected mode.

#### ● Effective flash range

Approx. 0.4 m to 2.5 m (1.3 ft. to 8.2 ft.)

- ⚠ When the flash mode is set to Suppressed Flash, the camera becomes ready to shoot more quickly after you switch it on.
- ⚠ If you switch from Suppressed Flash mode to another flash mode, you may find that the displayed image disappears and the screen goes dark because the flash is charging. When this happens, the viewfinder lamp flashes orange.



#### Auto Flash (no icon)

Use this mode for ordinary photography. The flash fires automatically as required by the conditions.





👁️ Red-Eye Reduction

Use this mode to ensure that the subject's eyes appear natural when photographing people in low-light conditions.

The flash fires a pre-flash just before the picture is taken and then fires again to take the actual picture.

◆ Red-Eye Effect ◆

When you use the flash to photograph people in low-light conditions, their eyes sometimes appear red in the picture. This is caused by the light of the flash reflecting off the inside of the eye. Use Red-Eye Reduction flash mode to effectively minimize the likelihood of the red-eye effect.

Take the following measures also to make Red-Eye Reduction mode more effective:

- Get the subjects to look at the camera.
- Get as close as possible to the subjects.



⚡ Forced Flash

Use this flash mode to photograph backlit scenes, such as a subject against a window or in the shade of a tree, or to obtain the correct colors when you are shooting under lighting such as fluorescent tubes. In this mode, the flash fires in bright as well as dark conditions.



🚫 Suppressed Flash

In this mode, the flash never fires.

Use this mode when you are taking pictures in indoor lighting at distances too great for the flash to have any effect, such as theater performances or indoor sporting events. When you use Suppressed Flash, the Auto White Balance function (→P.95) operates so that natural colors are captured along with the ambience of the available light.

- ⚠️ If you want to take a picture in low-light conditions with the flash mode set to Suppressed Flash, you should use a tripod to prevent camera shake.
- ⚠️ See P.25 and P.103 for information on the camera shake warning.



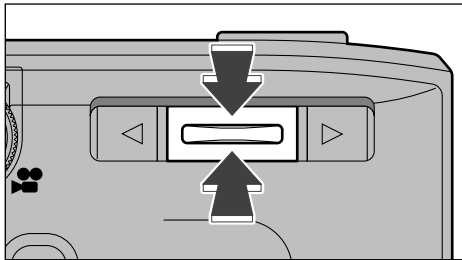
S⚡ Slow Synchro

This mode allows you to use the flash with a slow shutter speed.

This mode allows you to take beautiful pictures that show your subject and still capture the background.

- ⚠️ Because slow shutter speeds are used, you should use a tripod to prevent camera shake.

## DIGITAL ZOOM



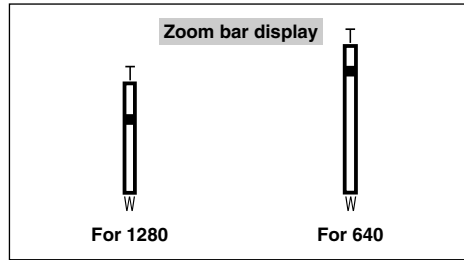
Pressing “▲( [ ] )” when the file size is set to “1280 × 960” or “640 × 480” selects digital zoom mode. However, this is only possible when you are using the LCD monitor to take pictures.

### • Digital zoom focal distance

1280 × 960: Approx. 36 mm to 68 mm (1.88×)

640 × 480: Approx. 36 mm to 135 mm (3.75×)

- ! The digital zoom focal lengths are the 35 mm camera equivalents.
- ! See P.41 for information on changing the file size setting.

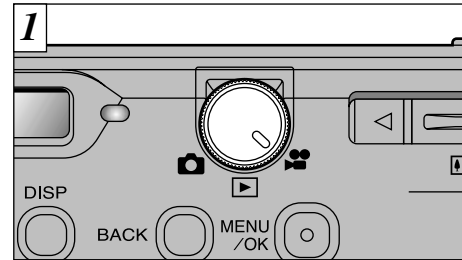



A “zoom bar” is displayed on the LCD monitor, but the length of the bar varies depending on the file size setting.

To check the picture in the LCD monitor easier, press the shutter button halfway.

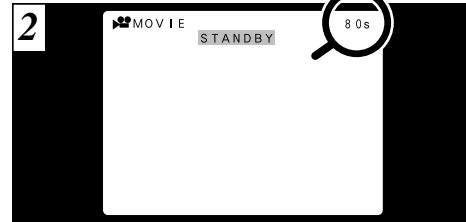
- ! You cannot use the digital zoom for resolutions of 2400 × 1800.

## MOVIE



Set the Mode dial to “”. In this mode, you can shoot up to 80 seconds of movie with sound at a time (Motion JPEG format (→P.95) at 320 × 240 pixels and 10 frames per second).

- ! Because the audio is recorded as you shoot, take care not to cover the microphone with your finger (→P.8).
- ! Depending on the space available on the SmartMedia, the time that can be recorded in one movie may be shorter than 80 seconds.
- ! You cannot switch the LCD monitor off in this mode.

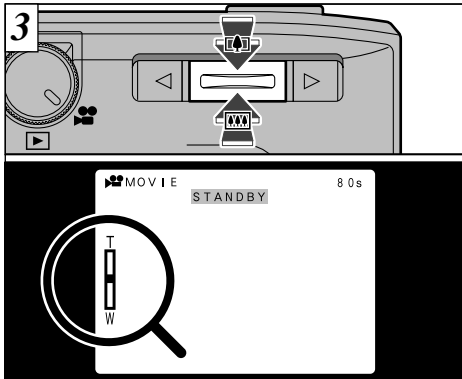


When you select Movie mode, the LCD monitor shows that available recording time and the “STANDBY” message indicating that the camera is ready to shoot. The time in the top-right corner shows the available recording time when shooting begins.

### ■ SmartMedia standard shooting time

SmartMedia capacity	MG-4S (4MB)	MG-8S (8MB)	MG-16S/SW (16MB)	MG-32S/SW (32MB)	MG-64S/SW (64MB)
Available recording time (sec.)	Approx. 22	Approx. 45	Approx. 90	Approx. 182	Approx. 364

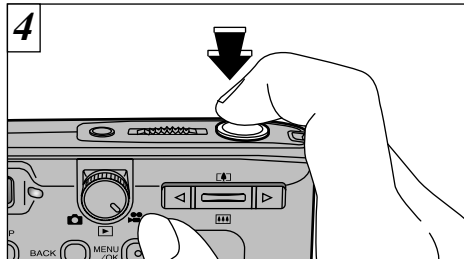
\* The available recording times are shown for formatted SmartMedia.



The “▲( [ ] )” and “▼( [ ] )” button control the digital zoom. A zoom bar is shown on the LCD monitor.

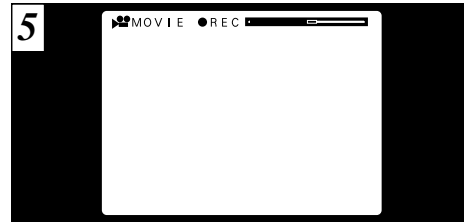
In the top right corner of the LCD screen is the bar showing the time remaining for recording.

- **Digital zoom focal distance**  
Approx. 36 mm to 68 mm (1.88×)



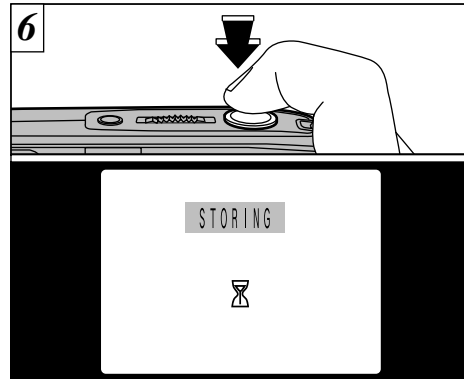
Shooting begins when you press the shutter button down fully.

- ⚠ While shooting a movie, there will not be a beep sound even if the shutter button is pressed.
- ⚠ You do not need to hold down the shutter button.
- ⚠ The focus is fixed at 80 cm (2.6 ft.) to infinity.
- ⚠ The focus and white balance are fixed during shooting, but the exposure varies automatically to suit the scene being shot.



A “recording time bar” is displayed on the LCD monitor during shooting.

- ⚠ The “recording time bar” is displayed as a guide to the amount of remaining recording time. When the recording time bar reaches the right-hand end, recording automatically ends and the data is recorded onto the SmartMedia.



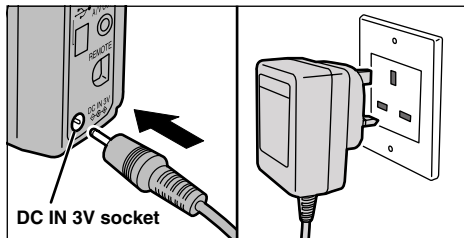
If you press the shutter button down fully during shooting, shooting stops and the movie is recorded onto the SmartMedia.

- ⚠ It takes about 11 seconds to record an 80-second movie (roughly 12 MB) onto a SmartMedia.
- ⚠ Even if you stop shooting immediately after it has begun, roughly 3 seconds of movie will be recorded.

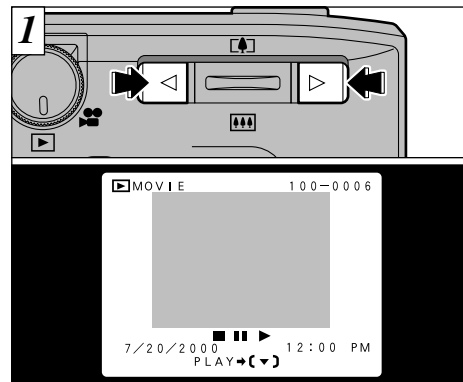
The Advanced Playback section introduces a range of playback functions that you can access by setting the Mode dial to “▶”.

### ■ Playback mode menu

Playback image	Menu options that can be set
▶ STILL IMAGES (⇒P.31)	<ul style="list-style-type: none"> <li>🗑 ERASING SINGLE/ALL FRAMES/ALL AUDIO FILES/FORMAT (⇒P.35, 57)</li> <li>▶ PLAYBACK (AUTOMATIC PLAYBACK) (⇒P.59)</li> <li>📐 RESIZE (⇒P.60)</li> <li>🔒 PROTECTION (⇒P.62)</li> <li>🖨 DPOF (Digital Print Order Format) (⇒P.66)</li> </ul>
🎥 MOVIE (⇒P.55)	<ul style="list-style-type: none"> <li>🗑 ERASING SINGLE/ALL FRAMES/ALL AUDIO FILES/FORMAT (⇒P.35, 57)</li> <li>▶ PLAYBACK (AUTOMATIC PLAYBACK) (⇒P.59)</li> <li>📄 CREATE INDEX (⇒P.75)</li> <li>🔒 PROTECTION (⇒P.62)</li> </ul>



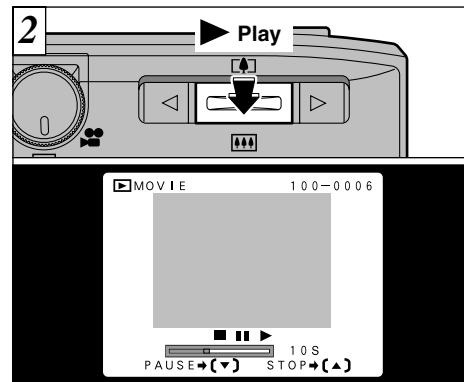
If you are close to a power outlet, you should use the AC Power Adapter AC-3V (sold separately) to avoid any loss of power during still image or movie playback. (⇒P.14)



Use “◀” and “▶” button to select the movie file. The screen used for movie appears on the LCD monitor.

- ⚠ You can adjust the speaker volume. (⇒P.91)
- ⚠ You can only play back movie files that have been shot on this camera and FinePix4700 Zoom.

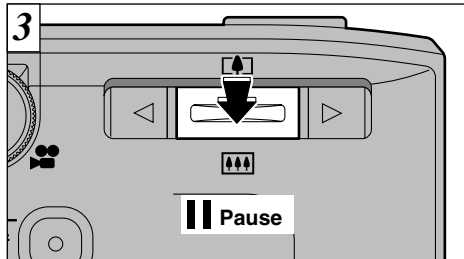
Movie images are displayed slightly smaller than multi-shot images and fast-forward frames.



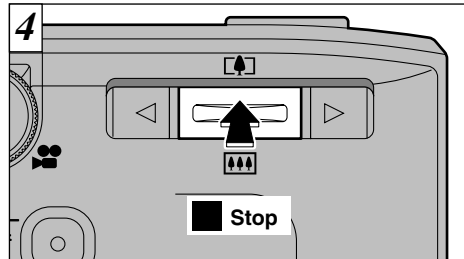
To play the movie, press “▶ (▶)” button. When playback begins, a playback progress bar and time are displayed.

- ⚠ When you play a movie file, the screen goes dark temporarily while the camera reads in the image data.
- ⚠ Playback automatically stops when the end of the file is reached and the initial screen reappears.
- ⚠ When you photograph extremely bright subjects, white stripes may appear during playback. This is normal and does not indicate a fault.

## MOVIE PLAYBACK



Press “▼ ( [ ] )” to pause movie playback. Press “▼ ( [ ] )” again to resume playback.



To stop playback altogether, press “▲ ( [ ] )”.

### ◆ Image data that can be played back ◆

You can use the FinePix40i to play back image data recorded on an FinePix40i or image data recorded on a 3.3-volt SmartMedia using a FUJIFILM Digital Camera FinePix4700 Zoom.

## PLAYBACK MENU



## ERASING SINGLE•ALL FRAMES/ALL AUDIO FILES/FORMAT

### FRAME

Erases only the selected still image or movie.

- ! This does not erase protected still images or movies. (→P.62, 64)

### ALL FRAMES

Erases all files other than protected still images or movies.

### ALL AUDIO FILES

Erases all the recorded audio data.

### FORMAT

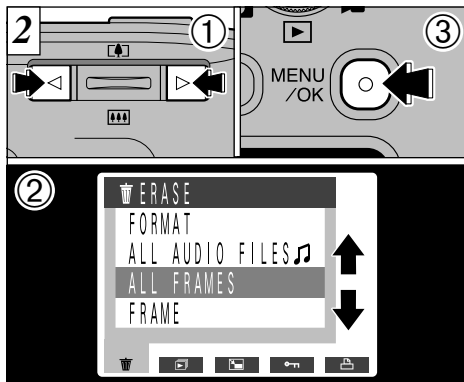
Erases all the data and reformats (initializes) the SmartMedia for use with this camera.

- ! Formatting also erases protected still images, tracks and movies.
- ! If the “ [ ] ” or “ [ ] ” message appears, wipe the contact surfaces on the SmartMedia (the gold-colored area) with a soft, dry cloth and then re-insert it into the camera. If this does not resolve the problem, format the card.



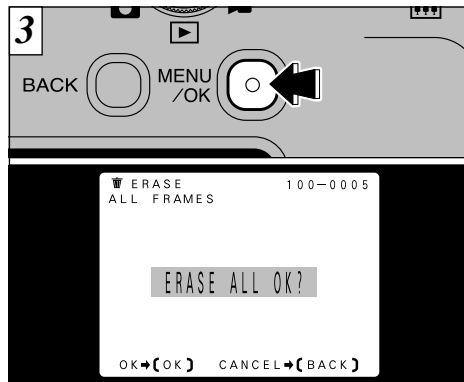
If you press the “MENU/OK” button, the menu screen will appear on the LCD monitor.

- ! Press the “BACK” button to exit the menu.



- ① Press “◀” or “▶” to select “🗑 ERASE”.
- ② Use the “▲(⏏)” and “▼(⏏)” buttons to select “FRAME”, “ALL AUDIO FILES”, “ALL FRAMES” or “FORMAT”.
- ③ Press the “MENU/OK” button.

Formatting erases all images and audio data.



- A confirmation screen appears.  
If you are erasing all the frames, or formatting the card, press the “MENU/OK” button to proceed.  
If you are erasing one frame, use the “◀” and “▶” buttons to select the frame and then press the “MENU/OK” button.
- ⚠ To cancel single-frame erase, all-frame erase or media formatting, press the “BACK” button.
  - ⚠ If the “DPOF SPECIFIED. ERASE OK?” message is displayed, DPOF is specified. When you press the “MENU/OK” button, the image is erased.

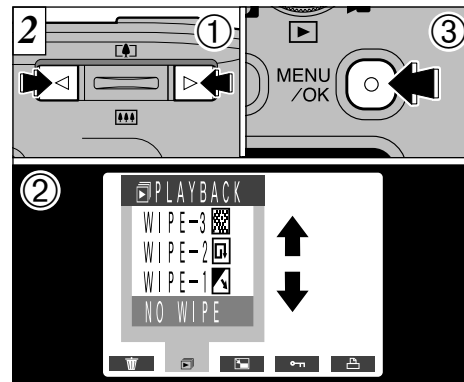


Press the “MENU/OK” button to display the menu on the LCD monitor.

- ⚠ The Auto Power Off function does not operate during playback.
- ⚠ Movie playback begins automatically. When playback ends, the next frame appears.

#### ◆ Display Method ◆

WIPE1 ...Oblique    WIPE2 ...Swirl  
WIPE3 ...Mosaic



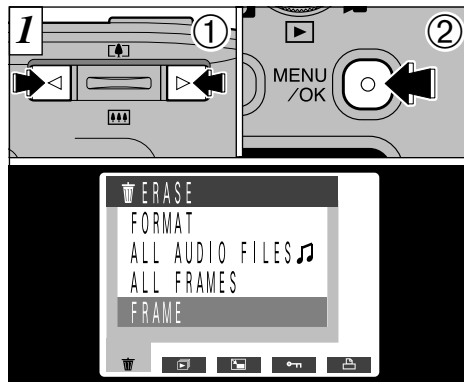
- ① Press “◀” or “▶” to select “▶ PLAYBACK”.
  - ② Use the “▲(⏏)” and “▼(⏏)” buttons to select one of the 3 display methods (wipes).
  - ③ Press the “MENU/OK” button. The image frames are automatically advanced and played back.
- ⚠ If you press the “DISP” button once during playback, “PLAYBACK” and the playback frame number are displayed on the LCD monitor.
  - ⚠ To interrupt playback, press the “BACK” button.



When you resize an image, a new file is created containing a smaller amount of data.

Only still images with a size of 2400 × 1800 or 1280 × 960 can be resized.

The resize menu option cannot be selected for images with a size other than 2400 × 1800 or 1280 × 960 .

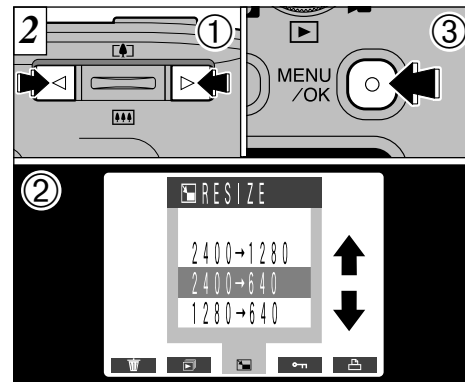


- ① Press “◀” or “▶” to select the image to be resized.
- ② Press the “MENU/OK” button to display the menu on the LCD monitor.

! Movie files cannot be resized.

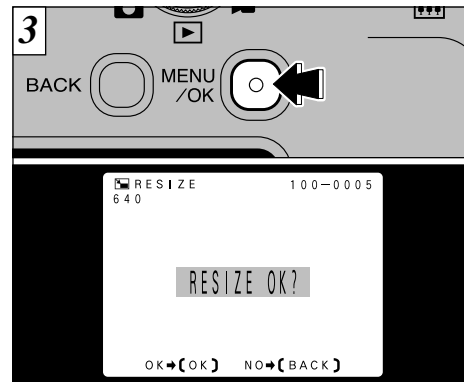
#### ◆ Why Resize? ◆

Resizing is extremely convenient when you want to attach an image file to an E-mail message.



- ① Press “◀” or “▶” to select “RESIZE”.
- ② Use the “▲( [▲] )” and “▼( [▼] )” buttons to select the desired image size.
- ③ Press the “MENU/OK” button.

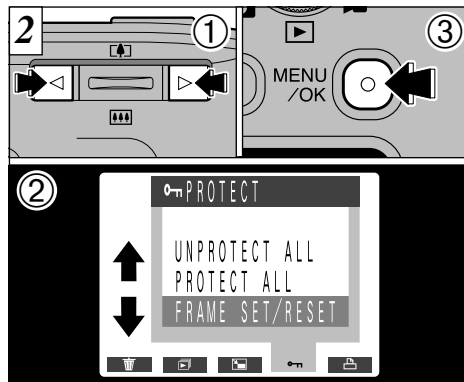
- ! You can only select sizes that are valid for this operation.
- ! Resizing will not proceed if the “CARD FULL” or “PROTECTED CARD” message is displayed. If this occurs, erase some unwanted images or use a SmartMedia that is not protected.



A confirmation screen appears. To proceed, press the “MENU/OK” button. The resized image is recorded as a separate file.

- ! If you do not want to resize the image, press the “BACK” button to return to the menu. To exit the menu screen, press the “BACK” button again.

## PLAYBACK MENU SETTING AND REMOVING SINGLE-FRAME PROTECTION



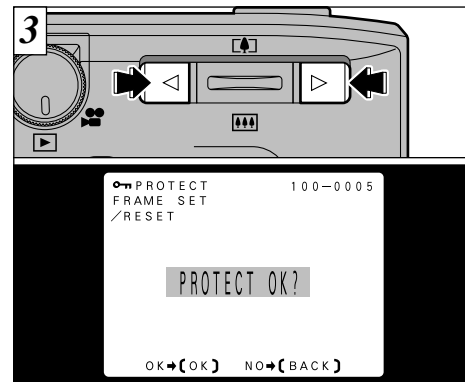
- 1 Use "◀" or "▶" to select "PROTECT".
- 2 Press "▲" or "▼" to select "FRAME SET/RESET".
- 3 Press "MENU/OK".

Press the "MENU/OK" button to display the menu on the LCD monitor.

Multi-frame playback is an easy way to select images to be protected (→P.34).

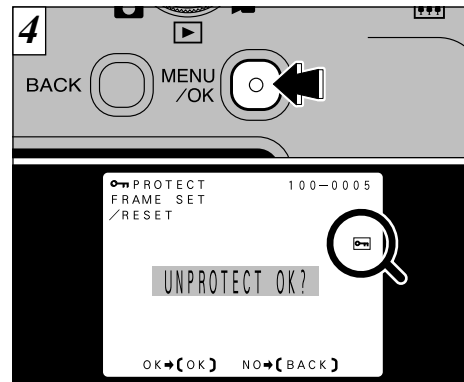
### Protection:

A setting that prevents images from being inadvertently erased (→P.57).



Use "◀" or "▶" to select the image to be protected.

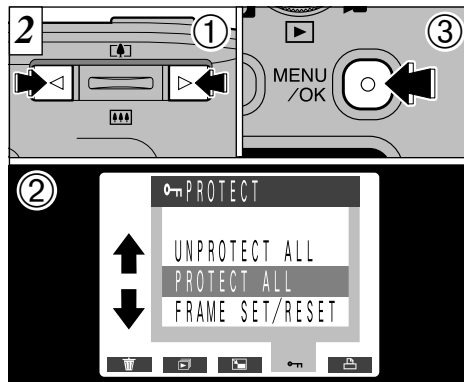
- Movie are protected one photographed item (file) at a time.
- If you do not want to protect any images, press the "BACK" button to return to the menu. To exit the menu screen, press the "BACK" button again.



When the "MENU/OK" button is pressed, the image is protected and the "PROTECT" icon appears on the right of the screen. To remove the protection, press the "MENU/OK" button again.

To protect another image, repeat the procedure from step 3.





- ① Use "◀" or "▶" to select "PROTECT".
- ② Press "▲" or "▼" to select "PROTECT ALL" or "UNPROTECT ALL".
- ③ Press "MENU/OK".



A confirmation screen will appear to proceed, press the "MENU/OK" button.

! If you do not want to protect any images, press the "BACK" button to return to the menu. To exit the menu screen, press the "BACK" button again.

Formatting erases all images, including protected images (→P.57).

## HOW TO SPECIFY PRINT OPTIONS



With the FinePix40i, you can order prints using the Digital Print Order Format (DPOF).

You can use the DPOF to specify the following:

- The frames to be printed and the number of prints for each frame
- Imprinting of the date and time

This section gives a detailed description of how to order your prints with the FinePix40i.

- \* Note that some printers do not support date and time imprinting or specification of the number of prints.
- \* Note that the warnings shown below may be displayed while you are specifying the prints.

DPOF SPECIFIED.  
ERASE OK? (→P.103)

When you erase the image, the DPOF setting for that image are deleted at the same time

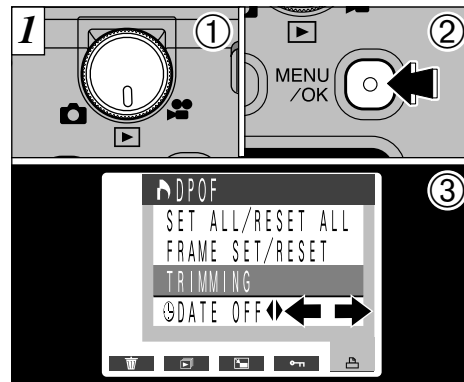
RESET UNMATCHED DPOF  
OK? (→P.103)

If you load a SmartMedia that contains frames specified for printing on another camera, those print specifications are all reset and replaced by the new print specifications.

DPOF FILE ERROR (→P.103)

No more than 999 frames can be specified on the same SmartMedia.

## PLAYBACK MENU DPOF DATE SETTING



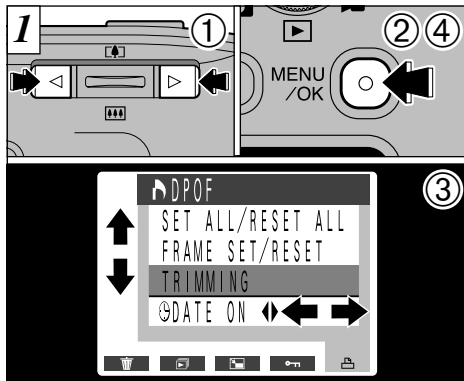
This function allows you to select whether or not the date of shooting is included on the print.

- ① Set the Mode dial to “▶”.
- ② Press the “MENU/OK” button to display the menu on the LCD monitor.
- ③ Press “◀▶” to select “ DPOF”.



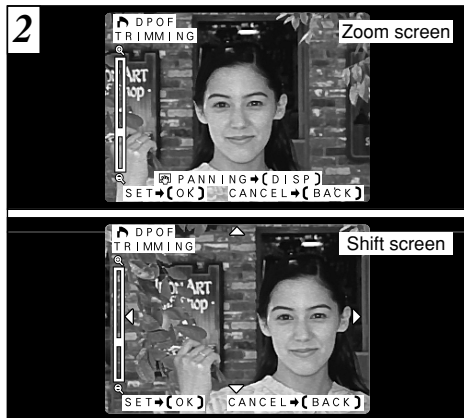
- ① Use “▼ ( )” to select “🕒 DATE”.
- ② Press “◀▶” to specify “DATE ON” or “DATE OFF”. This setting is then valid for all the prints until the setting is changed.

Before specifying any other settings, first specify whether date is to be shown or not.



- ① Use “◀” or “▶” to display the image you want to trim on the LCD monitor.
- ② Press the “MENU/OK” button to display the menu.
- ③ Use “◀”, “▶”, “▲(□)” and “▼(■)” to select the trimming.
- ④ Press the “MENU/OK” button.

⚠ Trimming can only be specified for images with a File Size setting of 2400 × 1800 or 1280 × 960. Trimming cannot be selected if you are playing back images with other file sizes.



You can alternate between the Zoom and Shift screens by pressing the “DISP” button.

Using the Zoom screen:

Use the “▲▼(□) ■)” button to zoom in and out.

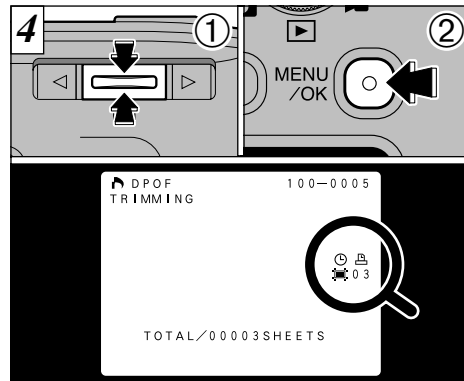
Using the Shift screen:

Use the “▲▼(□) ■)”, “▶” and “◀” buttons to shift the position of the area to be trimmed.

⚠ Cropping cannot be specified for 640 × 480 pixel images.

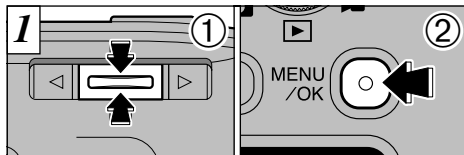


When you press the “MENU/OK” button, the cropping settings are determined as shown in the image on the LCD monitor.



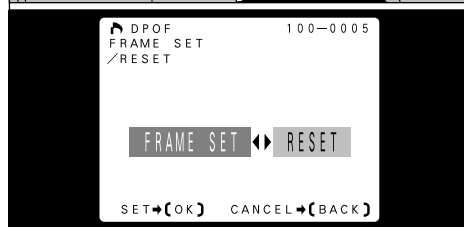
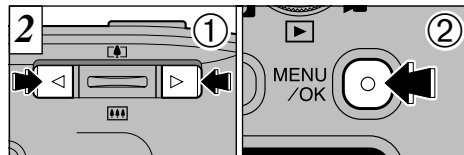
- ① Use the “▲▼(□) ■)” button to specify the number of prints.
- ② Press the “MENU/OK” button to confirm the settings and return to the menu screen.

The “🔍” icon is displayed for the frame for which trimming has been confirmed.



- ① Use the "▲▼( [ ] [ ] )" button to select "FRAME SET/RESET".
- ② Press the "MENU/OK" button.

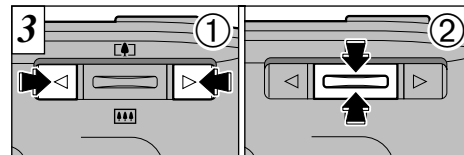
- ⚠ Before specifying FRAME SET, always specify whether the date is set.
- ⚠ Specifying "SET ALL" after FRAME SET or TRIMMING erases the trimming settings and the number of frames for which FRAME SET is specified.



- ① Use "◀" or "▶" to select "FRAME SET" or "RESET".
- ② Press the "MENU/OK" button.

- ⚠ Multi-frame playback is an easy way to select images to be printed (→P.34).

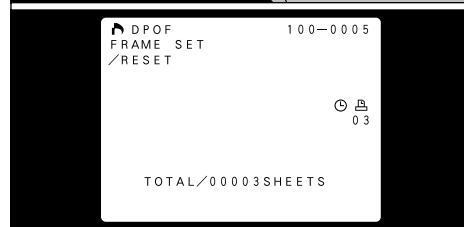
If you select FRAME SET, proceed to step 3.  
If you select RESET, proceed to step 6.



### Selecting FRAME SET

- ① Use "◀" or "▶" to display the frame for which you want to specify DPOF settings.
  - ② Use "▲( [ ] )" or "▼( [ ] )" to specify the number of prints.
- ⚠ You can specify up to 99 prints for each frame. Also, the maximum number of frames that can be specified for printing on the same SmartMedia is 999.

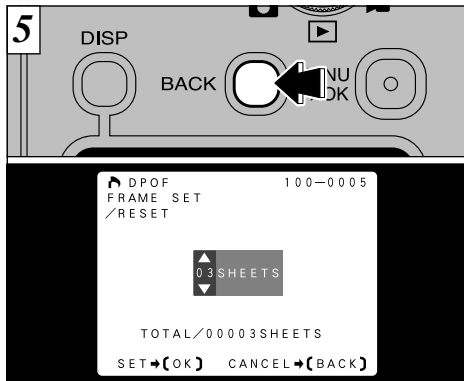
To continue using FRAME SET, repeat steps ① and ②.



### <To Apply the Settings>

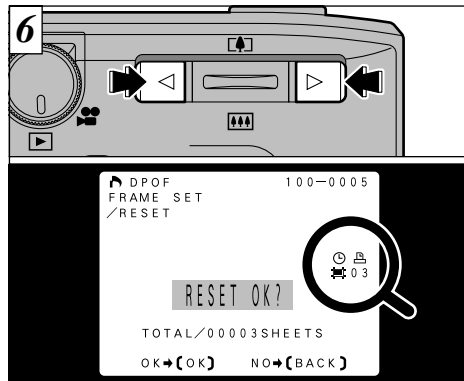
When you have finished specifying the DPOF settings, always press the "MENU/OK" button to confirm the settings. The total number of prints appears on the LCD monitor and the menu screen reappears. The "🖨" icon and the number of prints is displayed for the frames for which settings have been confirmed. If the date has been set, the "🕒" icon is also displayed.

- ⚠ "TOTAL" shows the total number of prints specified.



**<To Cancel the Settings>**

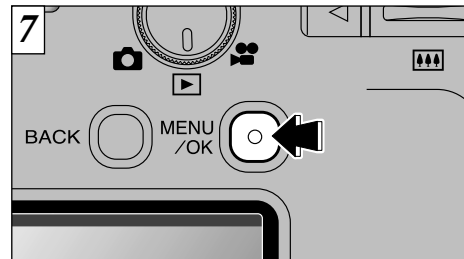
Pressing the “BACK” only cancels the setting for the currently selected frame. You cannot cancel settings for frames other than the currently selected frame.



**Selecting FRAME RESET**

You can use “◀” or “▶” to check only those frames for which the number of prints has been set. The settings for each frame are shown on the right-hand edge of the screen.

- ⚠ Multi-frame playback (→P.34) provides a convenient way of selecting images.
- ⚠ Press the “BACK” button to cancel the FRAME RESET procedure and return to the menu screen. To exit the menu screen, press the “BACK” button again.

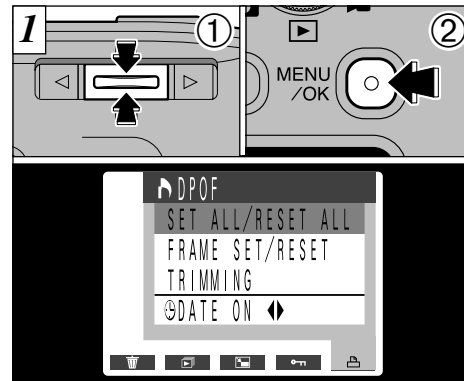


To reset the print settings, press the “MENU/OK” button to display the image for which you want to reset the settings.

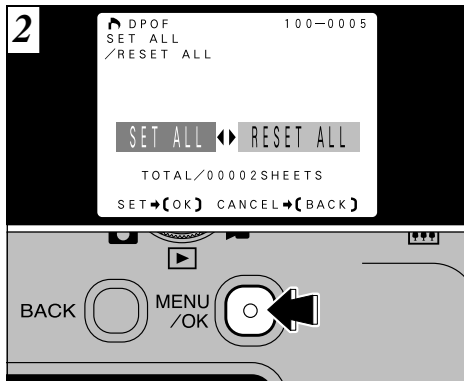
When you have finished resetting the settings, the next image for which print settings have been specified appears and the “RESET OK?” message is displayed.

- ⚠ If you erase all the print settings, the “TOTAL” changes to “00000” and the screen in the background goes dark.

To continue using FRAME RESET, repeat the procedure from step 6.

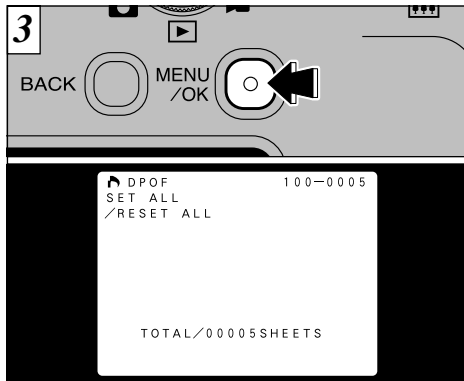


- ① Use “▲(◻▲)” or “▼(◻▼)” to select “SET ALL/RESET ALL”.
- ② Press the “MENU/OK” button.



- ① Use “◀” or “▶” to select “SET ALL” or “RESET ALL”.
- ② Press the “MENU/OK” button.

- ! “SET ALL” specifies 1 print for all the images.
- ! The FRAME SET specifications and cropping settings are cancelled.
- ! Prints can be specified for up to 999 frames on the same card. If you specify more than 1000 frames, the “DPOF FILE ERROR” warning appears.

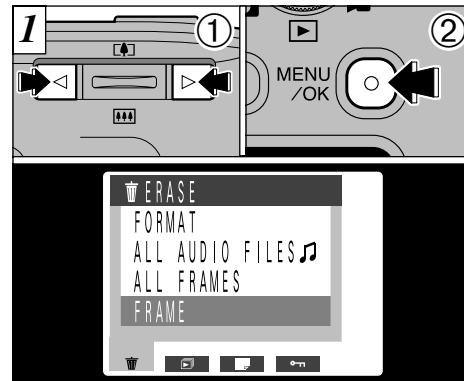


- Press the “MENU/OK” button to apply the settings.  
The total number of prints is displayed on the LCD monitor and then the menu screen reappears.

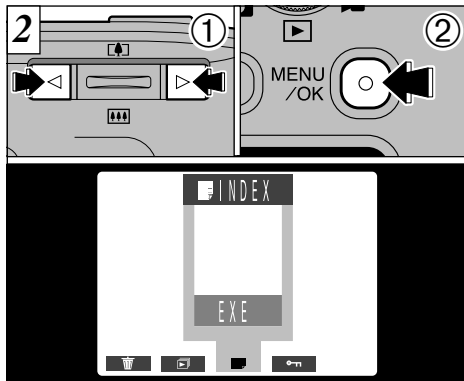
- ! “TOTAL” shows the total number of prints specified.
- ! If you cancel all of the frames, the “TOTAL” display reverts to “00000”. The frames also remain protected.

Index creation can only be specified when there are image files selected.  
This feature creates index images which allow you to view the content of a movie file without playing it back.  
To create the index, the function selects 25 image frames from the movie file at regular intervals and then saves them in rows as a single image (2400 × 1800).

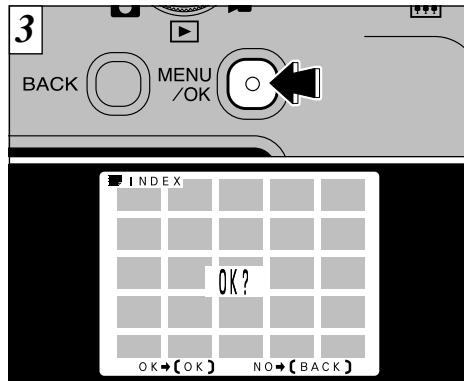
- ! The interval between the automatically selected frames varies depending on the movie recording time.



- ① Use “◀” or “▶” to select the movie file.
- ② Press the “MENU/OK” button to display the menu.

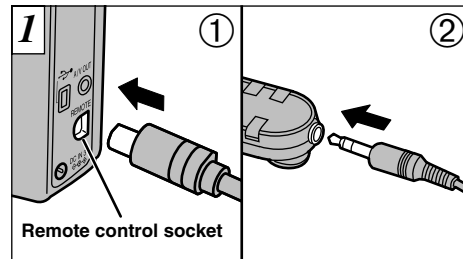


- ① Use “◀” or “▶” to select “INDEX”.
- ② Press the “MENU/OK” button.



The index preview screen appears. To record the index, press the “MENU/OK” button.

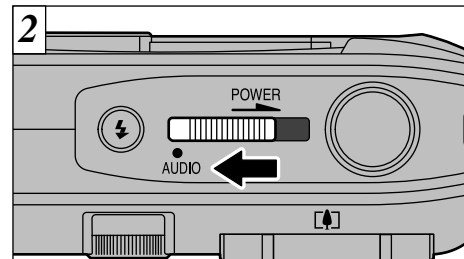
- ⚠ If you do not want to record the index, press the “BACK” button to return to the menu. To exit the menu screen, press the “BACK” button again.



- ① Plug the remote control provided with the camera into the remote control socket on the camera.
- ② Connect the headphones to the remote control.

- ⚠ Third-party headphones (stereo, mini-plug) can be used.
- ⚠ The remote control unit provided with this camera cannot be used with other devices. Likewise, other remote control units cannot be used with this camera.

Audio output is only through headphones. Audio for movies is only output to speakers or from the A/V OUT socket.



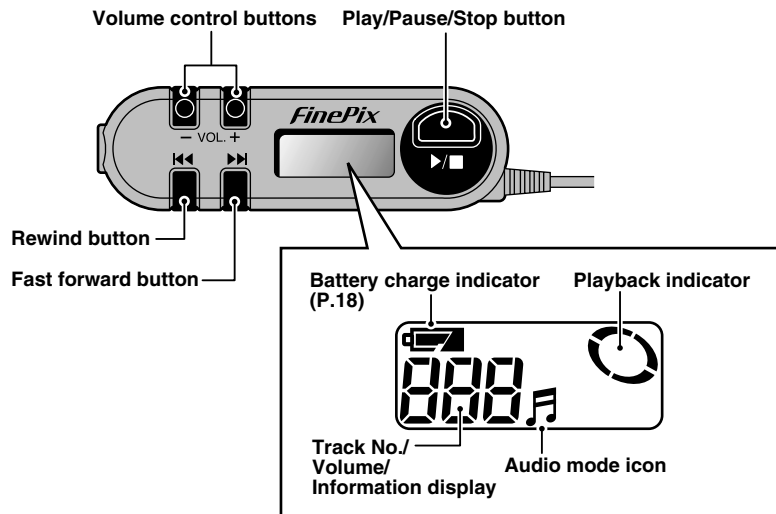
To use the camera for audio, slide the POWER switch to “AUDIO”. Note that this only turns the camera on for audio playback.

- ⚠ In “AUDIO” mode, the control buttons on the camera do not function.

◆ **Audio** ◆

The audio system in the FinePix40i uses the InfoBind system. InfoBind is a copyright protection technology developed jointly by NTT, NTT East and Kobe Steel, Ltd.

## USING AUDIO (REMOTE CONTROL TOP VIEW)



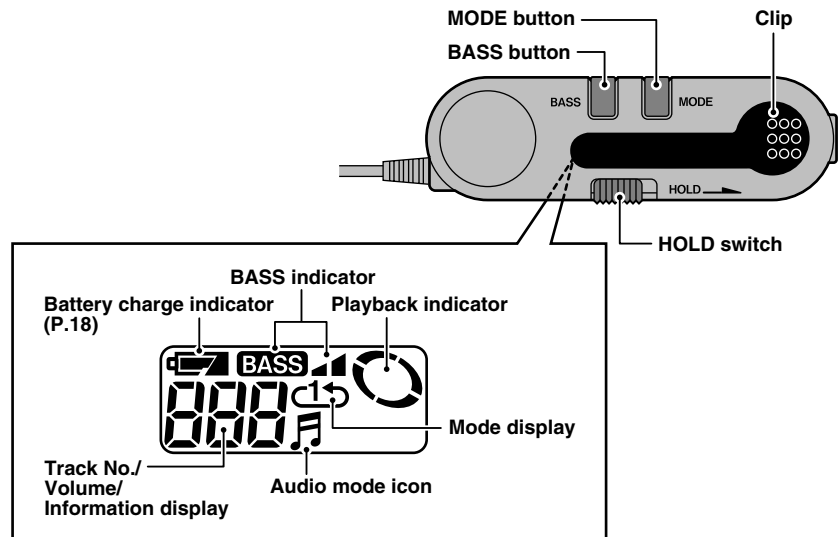
Operation	Remote Control Operation	LCD Display
Playback	Press the "▶/■" button. * If you use this button to restart playback, playback begins from the start of the last track you were playing.	The playback indicator revolves.
Pause	Press the "▶/■" button during playback. * If you leave playback paused for about 3 minutes, the camera automatically switches itself off.	The playback indicator blinks.
Resume	Press the "▶/■" button while playback is paused.	None
Go to start of current track	Press the "◀◀" button once. *1	None
Go to start of previous track	Press the "◀◀" button repeatedly or hold down the "◀◀" button. *1, *2	The track numbers count down.
Go to start of next track	Press the "▶▶" button once. *1, *2	None
Go to start of track after next	Press the "▶▶" button repeatedly or hold down the "▶▶" button. *1, *2	The track numbers count up.
Stop	Hold down the "▶/■" button for at least 1 second. * If you do not use the camera for about 15 seconds after stopping playback, the camera automatically switches itself off.	The playback indicator is displayed (but does not move).
Adjust volume	Press the volume control buttons to adjust the volume to the desired level.	A setting between 00 and 20 is displayed.

\*1 The operations can only be performed during playback or while playback is paused.

\*2 If the playback mode is set to "Repeat all Tracks (↺)" or "Repeat Track (↻)", pressing the "◀◀" button to return to the first track takes you to the final track. Similarly, pressing the "▶▶" button to skip ahead to the final track takes you to the first track.



## USING AUDIO (REMOTE CONTROL BOTTOM VIEW)

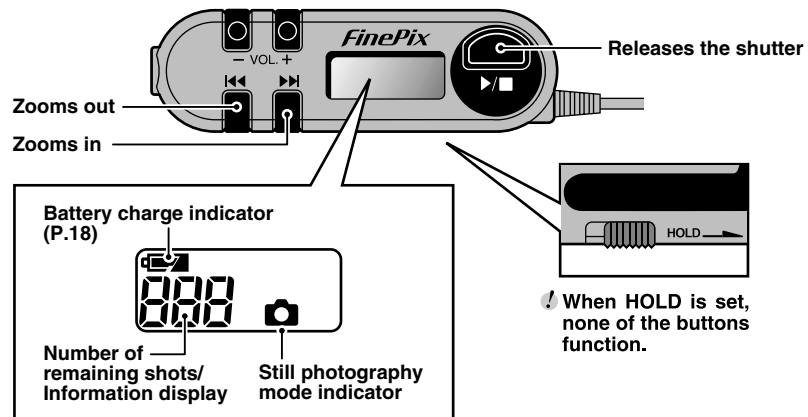


Selected Function	Remote Control Operation	LCD Display
Repeating the performance (listening to the same track repeatedly)	<p>Press the <b>"MODE"</b> button.</p> <p>* The Mode button sequentially from Normal → Repeat All Tracks → Repeat Track each time you press the button.</p> <ul style="list-style-type: none"> <li>• Normal: Stops when all the tracks have been played.</li> <li>• Repeat All Tracks: Plays all the tracks repeatedly.</li> <li>• Repeat Track: Plays the currently displayed track repeatedly.</li> </ul>	<ul style="list-style-type: none"> <li>• Normal: None</li> <li>• Repeat All Tracks: </li> <li>• Repeat Track: </li> </ul>
Emphasizing low tones (to listen to particularly serious and intense music)	<p>Press the <b>"BASS"</b> button.</p> <p>* The BASS button sequentially from Normal → Bass 1 → Bass 2 each time you press the button. "Bass 2" gives greater emphasis to bass sound.</p> <p>* If the sound is distorted, lower the volume.</p>	<ul style="list-style-type: none"> <li>• Normal: None</li> <li>• Bass 1: </li> <li>• Bass 2: </li> </ul>
Preventing erroneous use (preventing buttons from being pressed in error)	<p>Slide the "Hold" switch in the "HOLD </p> direction. To release the hold, slide the switch back to its original position. <p>* The HOLD setting disables all remote control operations.</p>	<p>If you use one of the buttons when HOLD is set, "HLD" appears on the display and no operation is performed.</p>

- ⚠ If you disconnect the remote control during audio playback, the FinePix40i continues in playback mode and will deplete the batteries. Always switch the FinePix40i off when you are not using the audio functions.
- ⚠ If you have disconnected the remote control, the power for shooting or playback will not switch on for at least 5 seconds.
- ⚠ Some noise may occur when the remote control is used. This is normal and does not indicate a fault.

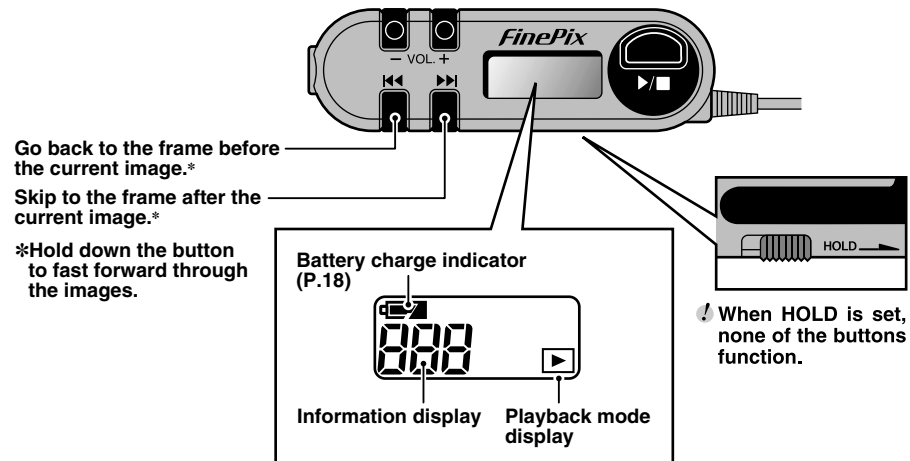
## TAKING PHOTOGRAPHS USING THE REMOTE CONTROL

- \*When you are taking pictures at night or in macro mode, using the remote control and a tripod is an effective way to avoid camera shake.
- \*The remote control cannot be used to shoot movies.



## PLAYBACK USING THE REMOTE CONTROL

- \*The remote control cannot be used to play movies.



⚠ When you switch the FinePix40i on or change the mode, press "◀◀▶▶" to switch on the LCD display.  
 ⚠ When the LCD panel on the remote control is switched off, you cannot zoom in or out as the first operation.

⚠ When the LCD panel on the remote control is switched off, you cannot use fast forward as the first operation.

## NOTES ON THE REMOTE CONTROL WARNINGS AND AUDIO

►The table below shows some of the warning displayed on the remote control LCD panel.

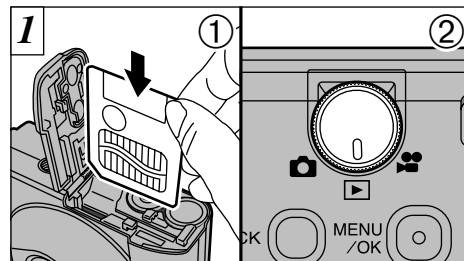
<b>Err</b>	No SmartMedia is loaded, or it is loaded incorrectly.	Load a SmartMedia or reload the SmartMedia the correct way round.
<b>Err</b>	The SmartMedia is not formatted.	Format the SmartMedia.
	<ul style="list-style-type: none"> <li>• The SmartMedia terminals are soiled.</li> <li>• The SmartMedia is damaged.</li> <li>• The SmartMedia format is incorrect.</li> </ul>	Wipe the contact area on the SmartMedia with a soft dry cloth. It may be necessary to format the SmartMedia. If the error message is still displayed, replace the SmartMedia.
	The SmartMedia is write-protected.	Use a SmartMedia that is not write-protected.
	An attempt was made to playback a frame not recorded on this camera.	Images cannot be played back.
<b>FULL</b>	The SmartMedia is fully recorded.	Erase some images or use a SmartMedia that has ample free space.
	The frame number has reached 999-9999.	Switch the Frame NO. Memory function off and use a formatted SmartMedia to take the picture.
<b>---</b>	No audio data	Audio cannot be played back.

### ■Notes on Using the Audio Functions

- Do not use while moving.  
Never use the headphones, try to operate the FinePix40i or look at the display screen while you are driving a car or other vehicle as this could cause a traffic accident. When you are using the FinePix40i while walking, pay close attention to surrounding traffic and the condition of the footpath.
- Do not use the FinePix40i at high volume for long periods and do not turn the volume up high when you begin listening. Listening to audio at high volume for long periods can adversely affect your hearing. Also, your ears can be damaged by sudden exposure to loud noise. Increase the volume gradually.

## USB CONNECTION/DOWNLOADING DATA

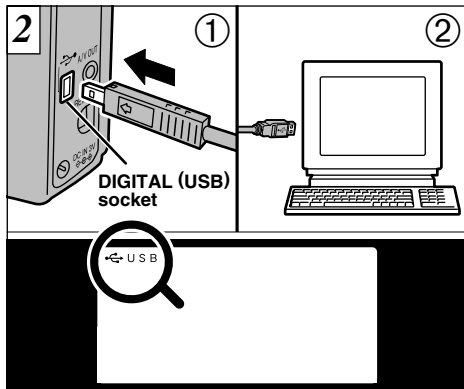
- Use the cable provided to connect the camera to a personal computer and download image data from the camera to the computer. Note that you can upload audio data from a personal computer to the camera.
- The software runs on Windows 98 (including the second edition), Windows 2000 Professional and Mac OS 8.5.1 to Mac OS 9.0 Note that your PC must be equipped with a USB port. (The software is not guaranteed to run on home-made PCs.)



- ① Insert the SmartMedia.
- ② Switch the camera on and set the Mode dial to "▶".

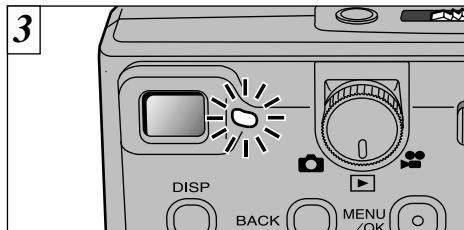
- ! The Auto Power Off function does not operate when the camera is connected to a PC.
- ! It is best to use AC Power Adapter AC-3V (sold separately) for this operation. Power loss during data transmission will prevent the image data from being downloaded correctly. (→P.14)

## USB CONNECTION/DOWNLOADING DATA



① Plug the small pin on the special cable into the Digital (USB) socket on the camera, and ② plug the other end of the cable into the USB port on the PC. When you switch the PC on, “USB” appears on the LCD panel.

- ⚠ Use only the special cable provided.
- ⚠ Refer to the “Quick Start Guide” provided with the camera for information on installing and using the software.

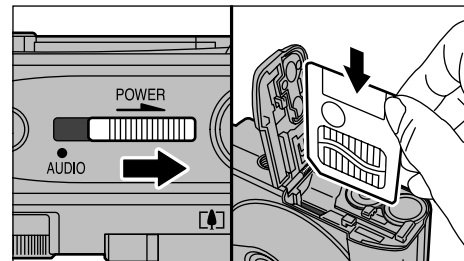


When the viewfinder lamp is orange, this indicates that the camera is being accessed (data is being downloaded). Never open the battery cover, disconnect the cable or press any of the camera buttons when the camera is being accessed.

- ⚠ To play back a movie on your personal computer, software such as QuickTime 4.0 is required. You should also copy the movie file to your hard disk before playing it back.
- ⚠ Refer to the “Quick Start Guide” provided with the camera for information on downloading audio data.

## USB CONNECTION/REPLACING SmartMedia™

- **On Windows 98**  
Check that the viewfinder lamp is green.
- **On Windows 2000 Professional**  
Check that the viewfinder lamp is green and then click on the Eject button in the taskbar.
- **On a Macintosh**  
Check that the viewfinder lamp is green and then drag the “Removable drive” icon on the desktop to the Trash.

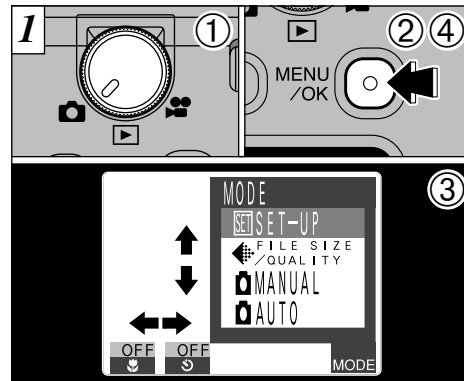


Switch the camera off and replace the SmartMedia.

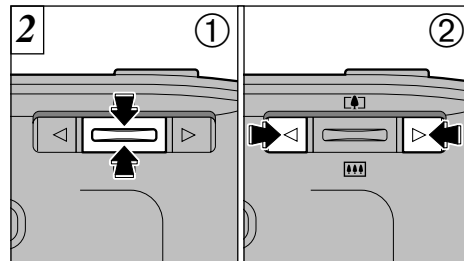
- ⚠ After you replace the SmartMedia, switch the camera back on and then reconnect the camera to the personal computer.

▶The table below explains the camera setting

Item	Display	Factory Default	Details
END	SET [OK]		Confirms the settings and exits setup.
AUTO POWER OFF	YES/NO	YES	Use this setting to specify whether the camera automatically switches off if it is left unused for 2 minutes. Note that the Auto Power Off function does not operate during Auto Play or when a USB connection is being used.
BEEP	HIGH/LOW/OFF	HIGH	Selects the volume of the beep sound emitted when camera controls are used.
DATE/TIME	SET [OK]		Allows you to set the date and time. See P.19 for details.
FRAME NO.	RENEW/CONT	RENEW	Selects whether the frame number memory function is used. See P.90 for details.



- ① Set the Mode dial to “”.
- ② If you press the “MENU/OK” button, the menu screen will appear on the LCD monitor.
- ③ Use “” or “” to select “MODE” and then use “ ( )” or “ ( )” to select “SET-UP”.
- ④ Press the “MENU/OK” button.



- ① Use “ ( )” or “ ( )” to select the item.
- ② Then use “” or “” to change the setting.

! Press the “MENU/OK” button to select “Set Date/Time”. See P.19 for details.

## FRAME NO. MEMORY

	<RENEW>	<CONT>
A	0001 ⋮ 0005	0001 ⋮ 0005
↓		
B	0001 ⋮ 0005	0006 ⋮ 0010

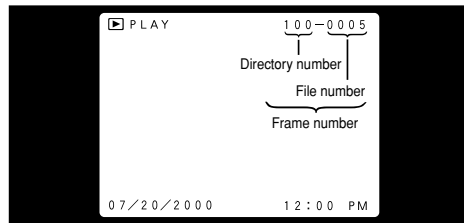
\* Formatted SmartMedia used for both A and B.

Setting this function to “CONT” makes file management easier as it ensures that file names are not duplicated when images are downloaded to a PC.

**RENEW** : Pictures are stored on each SmartMedia beginning with a file number “0001”.

**CONT** : Pictures are stored beginning from the highest file number stored on the last SmartMedia used.

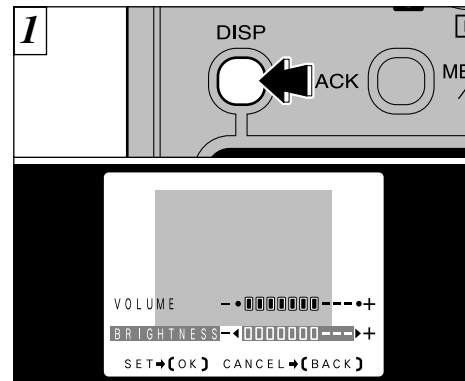
⚠ If the SmartMedia already contains image files with file numbers higher than the highest file number on the last SmartMedia, images are stored beginning from the highest file number on the current SmartMedia.



You can check the file number by viewing the image. The last 4 digits of the 7-digit number in the top right corner of the screen are the file numbers, while the first 3 digits show the directory number.

- ⚠ When you change the SmartMedia, always switch the camera off before you open the battery cover. If you open the battery cover without switching the camera off, the frame number memory will not function.
- ⚠ File numbers run from 0001 to 9999. Once 9999 is exceeded, the directory number goes up by 1. The maximum number is 999-9999.
- ⚠ If you switch the Frame No. Memory function off, the highest file number stored by the function is reset.
- ⚠ The displayed frame number may differ for images photographed on other cameras.

## ADJUSTING THE LCD MONITOR BRIGHTNESS AND THE SPEAKER VOLUME



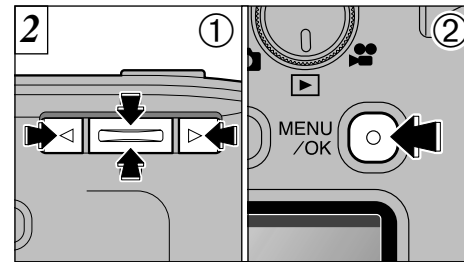
If you hold down the “DISP” button for 2 seconds, the “Adjustment bar” appears.

### • Adjusting the BRIGHTNESS

You can only adjust the brightness when the Mode dial is set to either “” or “”.

### • Adjusting the VOLUME

The speaker volume can only be adjusted when the Mode dial is set to “” and a movie file is selected.

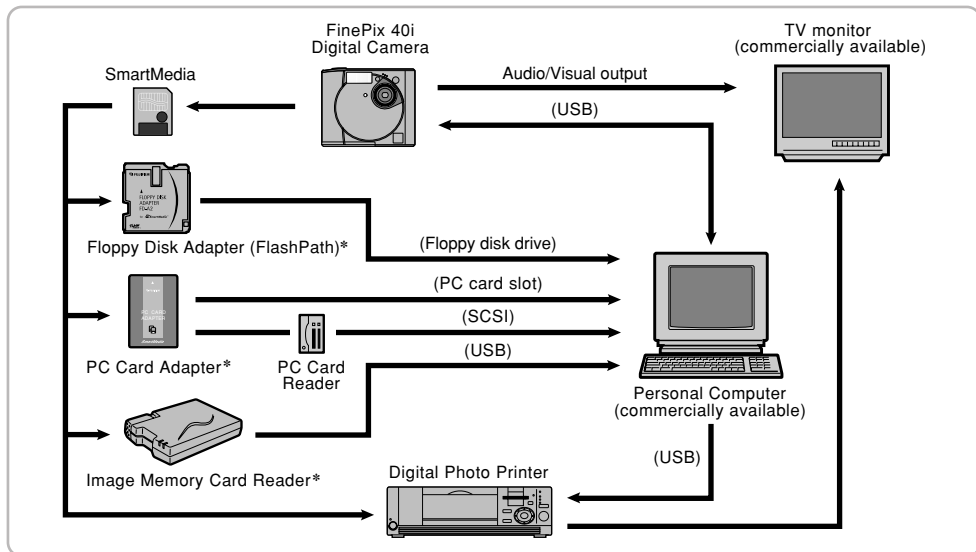


- ① Press “” and “” button to adjust the LCD monitor brightness or the speaker volume. Use “ ( )” and “ ( )” button to switch between brightness and volume.
- ② Press the “MENU/OK” button to confirm the setting.

- ⚠ If movie playback is in progress, playback is paused.
- ⚠ The settings cannot be changed if the LCD monitor is switched off.
- ⚠ To exit this procedure without changing the settings, press the “BACK” button.

## System Expansion Options

►By using the FinePix40i together with other optional Fujifilm products, your system can be expanded to fill a wide range of uses. See P.93 to 94 for details.



\* Optional accessories marked with an asterisk (\*) cannot handle audio files.

## Optional Accessories Guide

►The optional accessories (sold separately) can make taking pictures with the FinePix40i even easier. For information on how to attach and use the accessories, refer to the instructions provided with the accessory used.

### ● SmartMedia™

These are SmartMedia cards sold separately. Use the 8 types listed below.

● MG-4S : 4MB, 3.3V    ● MG-8S : 8MB, 3.3V    ● MG-16S: 16MB, 3.3V

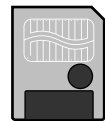
● MG-32S: 32MB, 3.3V    ● MG-64S: 64MB, 3.3V

\* Some 3.3V SmartMedia are labelled as "3V" cards.

● MG-16SW: 16MB, 3.3V, ID    ● MG-32SW: 32MB, 3.3V, ID

● MG-64SW: 64MB, 3.3V, ID

\* SmartMedia with ID are labelled as "ID" cards.



### ● AC Power Adapter AC-3V

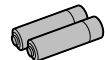
Use the AC-3V when taking pictures for a long period of time or when the FinePix40i is connected to a personal computer.

\* The Shapes of the AC power adapter, the plug and socket outlet depend on the country.



### ● Fujifilm Rechargeable Battery 2HR-3UF

The 2HR-3UF includes 2 pieces of high-capacity AA-size Nickel Metal Hydride batteries.



### ● Fujifilm Rechargeable Battery 4KR-3UF

The 4KR-3UF includes 4 pieces of high-capacity AA-size Ni-Cd batteries.

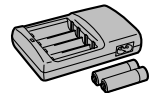


### ● Fujifilm Battery charger with Battery BK-NH (AC 220V only)

The BK-NH includes the quick battery charger BCH-NH and 2 Ni-MH batteries.

The BCH-NH can charge 2 Ni-MH batteries in approximately 110 minutes.

Up to 4 Ni-MH or Ni-Cd batteries can be charged simultaneously.



### ● Floppy Disk Adapter (FlashPath)

Cannot be used to store audio files.

This adapter is the same size and shape as a 3.5-inch floppy disk. You can copy the images on a SmartMedia to your PC simply by loading the SmartMedia into the floppy disk adapter and then inserting the adapter into your floppy disk drive.

	Compatible OS	Compatible SmartMedia
<b>FD-A1/A1S/A1N</b>	Windows95/98, NT 4.0	5V/3.3V, 2MB to 32MB
<b>FD-A2</b>	Macintosh	5V/3.3V, 2MB to 64MB



### ● PC Card Adapter

Cannot be used to store audio files.

The PC Card Adapter allows the SmartMedia to be used as a PC Card Standard ATA-compliant (PCMCIA 2.1) PC card (Type II).

- PC-AD2: Compatible with SmartMedia of 5V/3.3V, 2MB to 8MB.
- PC-AD3: Compatible with SmartMedia of 5V/3.3V, 2MB to 64MB.

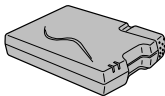


### ● SM-R1/R2 Image Memory Card Reader

Cannot be used to store audio files.

The SM-R1/R2 allows images to very easily be read and written from an image memory card (SmartMedia) to a personal computer. Its USB interface provides high-speed data transmission.

- Windows98 or Power Macintosh with USB interface.



### ● SC-FX40

This is a special case made of rayon.

This case can be used when carrying the camera to protect it from dust, dirt and mild impacts.

### AF/AE Lock:

On the FinePix40i, pressing the shutter button down half way locks the focus and exposure settings (AF and AE lock). If you want to focus on a subject that is not centered in the frame or change the picture composition after the exposure is set, you can obtain good results by changing the composition after the AF and AE settings are locked.

### Auto Power Off Function:

If the camera is not used in any way for two minutes or more, the Auto Power Off function switches the camera off. This is to prevent battery depletion and to avoid wasting power when the camera is connected to the AC power adapter.

- The Auto Power Off function does not operate in PC mode, during automatic playback, or if it is disabled during setup.

### DPOF:

Digital Print Order Format

DPOF is a format used for recording information on a storage media (image memory card, etc.) that allows you to specify which of the frames shot using a digital camera are printed and how many prints are made of each image.

### EV:

A number that denotes exposure. The EV is determined by the brightness of the subject and sensitivity (speed) of the film or CCD. The number is larger for bright subjects and smaller for dark subjects. As the brightness of the subject changes, a digital camera maintains the amount of light hitting the CCD at a constant level by adjusting the aperture and shutter speed.

When the amount of light striking the CCD doubles, the EV increases by 1. Likewise, when the light is halved, the EV decreases by 1.

### JPEG:

Joint Photographics Experts Group

A file format used for compressing and saving color images. The compression ratio can be selected, but the higher the compression ratio, the poorer the quality of the expanded image.

### Motion JPEG:

A type of AVI (Audio Video Interleave) file format that handles images and sound as a single file. Images in the file are recorded in JPEG format. Motion JPEG can be played back by QuickTime 3.0 or later.

### MP3:

An acronym for MPEG1 Audio Layer 3. Denotes an audio compression format included in the MPEG video and audio compression standard. The MP3 format compresses audio data to approximately 1/10 of its original size by excluding all audio information that is not audible to humans.

### PC Card:

A generic term for cards that meet the PC Card Standard.

### PC Card Standard:

A standard for PC cards determined by the PCMCIA.

### PCMCIA:

Personal Computer Memory Card International Association (US).

### White Balance:

Whatever the kind of the light, the human eye adapts to it so that a white object still looks white. On the other hand, devices such as digital cameras see a white subject as white by first adjusting the color balance to suit the color of the ambient light around the subject. This adjustment is called matching the white balance. A function that automatically matches the white balance is called an **Automatic White Balance function**.



# Notes on Using Your Camera Correctly

► Be sure to read this information in conjunction with before you use this product “Safety Notes” (→P.109) to ensure that you use your camera correctly.

## ■ Places to Avoid

Do not store or use the camera in the following types of locations:

- Very humid, dirty or dusty places
- In direct sunlight or in places subject to extreme temperature rises, such as in a closed car in summer. Extremely cold places
- Places subject to strong vibrations
- Places affected by smoke or steam
- Places subject to strong magnetic fields (such as places near motors, transformers or magnets)
- For long periods in contact with chemicals such as pesticides or next to rubber or vinyl products

## ■ Do not expose the camera to sand.

The FinePix40i is particularly and adversely affected by sand. In sandy locations such as beaches or deserts, or in locations where there is wind borne sand, ensure that the camera is not exposed to sand. This can cause faults that may be irreparable.

## ■ Notes on Condensation

If the camera is carried suddenly from a cold location into a warm place, water droplets (condensation) may form on the inside of the camera or on the lens. When this occurs, switch the camera off and wait an hour before using the camera. Condensation may also form on the SmartMedia card. In this event, remove the SmartMedia and wait a short time before using it again.

## ■ When the Camera is Unused for Long Periods

If you do not intend to use the camera for a long period of time, remove the batteries and the SmartMedia card before storing the camera.

## ■ Cleaning Your Camera

- Use a blower brush to remove dust from the lens and LCD surface and then wipe lightly with a soft, dry cloth. If any soiling remains, apply a small amount of lens cleaning liquid to a piece of Fujifilm lens cleaning paper and wipe gently.
- Do not scratch hard objects against the lens, LCD monitor screen or viewfinder as these surfaces are easily damaged.
- Clean the body of the camera with a soft dry cloth. Do not use volatile substances such as thinners, benzine or insecticide, as these may react with camera body and cause deformation or remove the coating.

## ■ Using the Camera Overseas

When travelling overseas, do not place your camera in the check-in baggage. Baggage handling at airports may subject baggage to violent shocks, and the camera may be damaged internally even when no external damage is visible.

# Notes on the Power Supply

## Applicable Batteries

- Use AA-size nickel-metal hydride (Ni-MH) or Ni-Cd batteries in this camera.  
AA-size lithium or manganese batteries cannot be used as they emit heat and can cause camera faults or damage.
- The capacities of alkaline batteries vary between brands and the life of the batteries (the time for which they provide power) may be very short. You should also switch the LCD monitor off if you are using alkaline batteries.

## Notes on the Batteries

Incorrect use of the batteries could cause them to leak, become hot, ignite or burst. Always observe the precautions given below.

- Do not heat the batteries or throw them into a fire.
- Do not carry or store a battery with metal objects such as necklaces or hairpins that could come into contact with the metal positive ⊕ and negative ⊖ poles of the battery.
- Do not expose the batteries to fresh or sea water, and take particular care to keep the terminals dry.
- Do not attempt to deform, disassemble or modify the batteries.
- Do not attempt to peel off or cut the battery casing.
- Do not drop, strike or otherwise subject the batteries to strong impacts.
- Do not use batteries that are leaking, deformed,

discolored or exhibit any other obvious abnormality.

- Do not store batteries in very warm or moist locations.
- Keep the batteries out of the reach of babies and small children.
- When loading the batteries in the camera, ensure that the battery polarity (⊕ and ⊖) is as indicated on the camera.
- Do not use new batteries together with used batteries. In the case of rechargeable batteries, do not use charged and discharged batteries together. Do not use batteries of different types or brands together.
- If you do not intend to use the camera for a long period of time, remove the batteries from the camera. (Note that if the camera is left with the batteries removed, the time and date settings are cleared.)
- The batteries may feel warm immediately after being used. Before removing the batteries, switch the camera off and wait until the batteries cool down.
- When replacing the batteries, always fit 2 new batteries. Here, ‘new batteries’ refers to either recently purchased unused alkaline batteries, or Ni-Cd or Ni-MH (nickel metal hydride) batteries that have recently been fully recharged together.
- Battery performance deteriorates at low temperatures (+10°C or below) and the time for which they can be used shortens. This is particularly true of alkaline batteries. In cold conditions, put the batteries in your pocket or a similar place to warm them before loading them into the camera. If you use a body warmer to warm the batteries, ensure that they are not in direct contact with the warmer.

## Notes on the Power Supply

- ⚠ If any liquid at all leaks from the batteries, wipe the battery compartment thoroughly and then load new batteries.
- ⚠ If any battery fluid comes into contact with your hands or clothing, flush the area thoroughly with water. Note that battery fluid can cause loss of eyesight if it gets in your eyes. If this occurs, do not rub your eyes. Flush the fluid out with clean water and contact your physician for treatment.

### ■ Disposing of Batteries

When disposing of batteries, do so in accordance with your local waste disposal regulations.

### ■ Notes on Small Rechargeable Batteries (Ni-MH or Ni-Cd batteries)

- Always use the special battery charger to charge AA-size Ni-MH or Ni-Cd batteries. Charge the batteries as described in the instructions provided with the battery charger.
- Do not use the battery charger to charge batteries other than those specified for use with the charger.
- Note that the batteries may feel warm immediately after being charged.
- Ni-MH and Ni-Cd batteries are not charged at shipment. Be sure to charge the batteries before using them.
- The camera mechanism is such that it draws a minute amount of current even when the camera is switched off. Take particular care not to leave Ni-MH or Ni-Cd batteries in the camera for a long period of time as they can become excessively discharged and no longer be useable even when charged.
- Ni-MH and Ni-Cd batteries self-discharge even when not

used. Always charge Ni-MH and Ni-Cd batteries before using them. If the time for which a battery provides power shortens markedly when it has been correctly charged, this indicates that the battery has reached the end of its effective life and should be replaced.

- Soiling (fingerprints, etc) on the terminals of Ni-MH batteries can greatly reduce the number of available shots. When this occurs, clean the terminals carefully with a soft dry cloth. Then use up the remaining charge in the batteries and recharge them.
- Newly purchased batteries or batteries that have been left unused for an extended period may not be fully charged. (This is indicated by the immediate display of the battery low warning or a low number of available shots.) This is a normal characteristic of the batteries and does not indicate a fault. Repeatedly charging and using the batteries 3 or 4 times will restore them to a normal condition.
- If you recharge Ni-MH or Ni-Cd batteries before they are fully depleted, this results in the “memory effect”, which causes the battery low warning to appear sooner. To restore the batteries to their normal condition, use up all the charge in the batteries before recharging them.

### Notes on Using the Battery Charger

- Rechargeable batteries and the battery charger itself will become warm due to the power stored inside the batteries. This is normal and does not indicate a fault. Wherever possible, use the battery charger in a well-ventilated location.
- There may be vibration noises from inside the battery

charger during use. This is normal and does not indicate a fault.

- Do not use the battery charger to recharge batteries other than Fujifilm HR-AA Ni-MH batteries or Fujifilm KR-AA Ni-Cd batteries.
- The battery charger could cause interference if placed close to a radio during charging. In this event, move the radio and charger further apart.
- Do not touch the connections or contact points on rechargeable batteries with other metal objects as this can cause a short circuit.
- Do not leave the battery charger in the following locations. Locations subject to strong vibrations, in very dusty locations, or in locations with very high humidity or high temperatures, such as close to a heating appliance or in direct sunlight.
- The battery charger accepts input voltages of 100-240 V AC at 50 or 60 Hz and can be used outside Japan. However, because the shapes of power sockets vary by country and by region, an appropriate plug adapter is also required for each country. Consult your travel agent for details.

### BC-NH Battery Charger Specifications

Rated input	100-240 V AC, 50/60 Hz
Input capacity	4 VA at 100 V AC, 5VA at 240 V AC
Rated output	1.2 V DC, 130 mA × 2
Applicable batteries	FUJIFILM HR-3UF (Ni-MH, 1500 mAh or 1600 mAh) FUJIFILM KR-3UF (Ni-Cd, 1000 mAh)

Charging time	HR-3UF (1500 mAh): Approx. 12 hours HR-3UF (1600 mAh): Approx. 13 hours KR-3UF (1000 mAh): Approx. 8 hours
Dimensions	86 mm × 68 mm × 24.6 mm (3.4 in. × 2.7 in. × 1 in.) (L × W × D)
Mass (Weight)	Approx. 80g (2.8 oz) (excluding batteries)
Operating temperatures	0°C to + 40°C (+ 32°F to + 104°F)

### Notes on Using the AC Power Adapter

Always use the AC-3V AC Power Adapter AC-3V (sold separately) with the FinePix40i Digital Camera. The use of an AC power adapter other than the AC-3V could result in damage to your camera.

- Ensure that you do not touch the contact areas on the AC power adapter against any other metal object as this could cause a short circuit.
- Do not plug the AC power adapter into the DIGITAL socket as this could damage your camera.
- Do not plug in the AC power adapter while you are operating the camera using batteries. Switch the camera off first.
- Do not load the batteries while you are operating the camera using the AC power adapter. Switch the camera off first.
- If you disconnect the AC power adapter when there are no batteries in the camera, the date and time settings will be lost and must be reset.

# Notes on the SmartMedia™

## ■ SmartMedia

The SmartMedia card is a new image recording medium developed especially for use in digital cameras. Each SmartMedia card contains a built-in semiconductor memory chip (NAND flash memory) which is used for storing digital image data.

Because the data is stored electronically, the stored image data can be erased from the card and new data recorded.

## ■ SmartMedia with ID

The SmartMedia with ID is a SmartMedia that has an individually assigned identification number. The SmartMedia with ID can be used with devices that use ID numbers for copyright protection or other purposes. This camera accepts SmartMedia with ID in the same way as conventional SmartMedia for image capturing.

## ■ Storing Data

In the situations listed below, recorded data may be erased (destroyed). Please note that Fuji Photo Film Co., Ltd. accepts no responsibility whatsoever for the loss (destruction) of recorded data.

\*When the SmartMedia is used incorrectly by the owner or a third party

\*When the SmartMedia is exposed to static electricity or electrical noise

\*When the SmartMedia cover is opened or the SmartMedia removed and the camera is then

switched off during data recording, during data erasing (SmartMedia formatting) or during frame advance when images are being played back.

## Back up important data onto another medium (MO disk, floppy disk, hard disk, etc.).

## ■ Notes on Handling SmartMedia

- When inserting the card into the camera, hold the SmartMedia straight as you push it in.
- Never remove the SmartMedia or switch the camera off during data recording, during data erasing (SmartMedia formatting) or during frame advance when images are being played back. These actions could result in damage to the SmartMedia.
- Use only the SmartMedia specified for use with the FinePix40i. The use of other SmartMedia could damage the camera.
- SmartMedia are precision electronic devices. Do not bend, drop, or subject SmartMedia to excessive shocks.
- Do not use or store SmartMedia in environments likely to be affected by strong static electricity or electrical noise.
- Do not use or store SmartMedia in very hot, humid or corrosive environments.
- Take care not to touch the SmartMedia's contact area or allow the area to become soiled. Use a dry lint-free cloth to wipe away any soiling that does occur.

- To avoid damage caused by static electricity, always use the special static-free case provided during transportation or storage, or keep the SmartMedia in a storage case if available.
- Do not carry SmartMedia in locations such as a trouser pocket. This could subject the SmartMedia to excessive force when you sit down, thereby damaging the SmartMedia.
- The SmartMedia may feel warm when it is removed from the camera after extended periods of picture taking or image viewing. This is normal and does not indicate a fault.
- Inserting a SmartMedia that is charged with static electricity into your camera may result in a camera malfunction. If this occurs, switch the camera off and then on again.
- Affix the label onto the designated area of the card. Do not use third-party labels as this can lead to problems when the card is inserted or removed.
- When you attach the label, take care that it does not cover any of the write-protect area.

## ■ Notes on Using SmartMedia with a PC

- If you intend to take photos using a SmartMedia that has been used on a PC, format the SmartMedia on your camera.
- When you format a SmartMedia in the camera and then shoot and record images, a directory (folder) is automatically created. Image data is then recorded in

this directory.



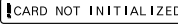

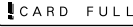

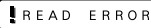

- Do not change or delete the directory (folder) names or file names on the SmartMedia from your PC as this will make it impossible to use the SmartMedia in your camera.
- Always use the camera to erase image data on a SmartMedia.
- To edit image data, copy the image data to the computer's hard disk and then edit the copied data.








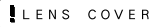
## ■ Specifications

Type	Image memory card for digital cameras (SmartMedia)
Operating voltage	3.3V
Operating conditions	Temperature: 0°C to + 40°C (+ 32°F to + 104°F) Humidity: 80% or less (condensation free)
Dimensions	37 mm × 45 mm × 0.76 mm (1.45 in. × 1.77 in. × 0.03 in.) (W × H × D)

## Warning Displays

▶The table below lists the warnings that are displayed on the LCD monitor.

Explanation	Warning Displayed	Remedy
	The camera battery is low on charge.	Replace or recharge the battery.
	No SmartMedia is loaded, or it is loaded incorrectly.	Load a SmartMedia or reload the SmartMedia the correct way round.
	The SmartMedia is not formatted.	Format the SmartMedia.
	<ul style="list-style-type: none"> <li>The SmartMedia terminals are soiled.</li> <li>The SmartMedia is damaged.</li> <li>The SmartMedia format is incorrect.</li> </ul>	Wipe the contact area on the SmartMedia with a soft dry cloth. It may be necessary to format the SmartMedia. If the error message is still displayed, replace the SmartMedia.
	The SmartMedia is fully recorded.	Erase some images or use a SmartMedia that has ample free space.
	The SmartMedia is write-protected.	Use a SmartMedia that is not write-protected.
	An attempt was made to playback a frame not recorded on this camera.	Images cannot be played back.
	The frame number has reached 999-9999.	Switch the Frame NO. Memory function off and use a formatted SmartMedia to take the picture.

Explanation	Warning Displayed	Remedy
	There is a strong likelihood of camera shake because the shutter speed is slow.	Set the flash to Forced Flash mode or use a tripod.
	A protected frame was erased.	Remove the protection.
	The AF (auto focus) cannot work effectively.	<ul style="list-style-type: none"> <li>If the shot is too dark, move at least 1.5 m away from the subject and try again.</li> <li>Use AF lock to take the picture.</li> </ul>
	Outside the AE continuous range.	The shot can be taken, but the exposure will not be correct.
	The image you tried to erase has a DPOF print setting.	When you erase the image, the DPOF settings for that image are deleted at the same time.
	The DPOF file contains an error. Alternatively, the DPOF file was set up on a different device.	Press the MENU/OK button to create a new DPOF file and specify all the DPOF settings again.
	Prints were specified for more than 1000 frames in the DPOF frame settings.	The maximum number of frames for which prints can be specified on the same SmartMedia is 999.
	<ul style="list-style-type: none"> <li>The lens cover is not open.</li> <li>Camera malfunction or fault.</li> </ul>	Switch the camera on again, ensuring that you are not touching the lens cover at the time. Switch the camera off and then on again a few times.

# Troubleshooting

▶ If you think the camera is faulty, check the following once more.

Problem	Cause	Remedy
No power	<ul style="list-style-type: none"> <li>The battery is exhausted.</li> <li>The AC power adapter plug has come out of the power outlet.</li> </ul>	<ul style="list-style-type: none"> <li>Load a new fully charged battery.</li> <li>Plug the adapter back in.</li> </ul>
Power cuts out during operation.	<ul style="list-style-type: none"> <li>The battery is exhausted.</li> <li>The terminals are soiled.</li> </ul>	<ul style="list-style-type: none"> <li>Load a new fully charged battery.</li> <li>Wipe the battery terminals with a clean, dry cloth before charging.</li> </ul>
Battery runs out quickly.	<ul style="list-style-type: none"> <li>You are using the camera in extremely cold conditions.</li> <li>The terminals are soiled.</li> <li>The battery is flat.</li> <li>You are using alkaline batteries.</li> </ul>	<ul style="list-style-type: none"> <li>Put the battery in your pocket or another warm place to heat it and then load it into the camera just before you take a picture.</li> <li>Wipe the battery terminals with a clean, dry cloth before charging.</li> <li>Load a new fully charged battery.</li> <li>Use Ni-MH or Ni-Cd batteries.</li> </ul>
No photograph is taken when the shutter button is pressed.	<ul style="list-style-type: none"> <li>No SmartMedia is loaded.</li> <li>The SmartMedia is fully recorded.</li> <li>The SmartMedia is write-protected.</li> <li>The SmartMedia is not formatted.</li> <li>The SmartMedia contact area is soiled.</li> <li>The SmartMedia is damaged.</li> <li>The Auto Power Off function has switched the camera off.</li> <li>The battery is exhausted.</li> </ul>	<ul style="list-style-type: none"> <li>Load a SmartMedia.</li> <li>Load a new SmartMedia or erase a frame.</li> <li>Remove the write-protection.</li> <li>Format the SmartMedia.</li> <li>Wipe the SmartMedia contact area with a clean dry cloth.</li> <li>Load a new SmartMedia.</li> <li>Switch the camera on.</li> <li>Load a new fully charged battery.</li> </ul>

Problem	Cause	Remedy
I can't use the flash to take pictures.	<ul style="list-style-type: none"> <li>The Mode dial has been moved to another setting.</li> <li>The flash is set to Suppressed Flash mode (The flash is closed).</li> <li>You pressed the shutter button while the flash was charging.</li> </ul>	<ul style="list-style-type: none"> <li>Set the Mode dial to the correct setting.</li> <li>Set the flash to Auto, Red-Eye Reduction or Forced Flash mode (Pop the flash unit up).</li> <li>Wait until charging is completed before pressing the shutter button.</li> </ul>
The flash will not charge.	<ul style="list-style-type: none"> <li>No compatible SmartMedia is loaded.</li> <li>The camera is set to Suppressed Flash mode.</li> <li>The camera is set to Macro Photography.</li> <li>The battery is exhausted.</li> </ul>	<ul style="list-style-type: none"> <li>Load a new SmartMedia, erase a frame, or remove the write-protection.</li> <li>Set the flash to Auto, Red-Eye Reduction or Forced Flash mode.</li> <li>Cancel Macro Photography.</li> <li>Load a new battery.</li> </ul>
The playback image is too dark even though I used the flash.	<ul style="list-style-type: none"> <li>The subject is too far away.</li> <li>Your finger covering the flash.</li> </ul>	<ul style="list-style-type: none"> <li>Move closer to the subject.</li> <li>Hold the camera correctly.</li> </ul>
The image is blurred.	<ul style="list-style-type: none"> <li>The lens is dirty.</li> <li>The lens is zoomed to telephoto in Macro mode.</li> </ul>	<ul style="list-style-type: none"> <li>Clean the lens.</li> <li>Cancel Macro mode.</li> </ul>
I cannot format the SmartMedia.	<ul style="list-style-type: none"> <li>The SmartMedia is write-protected.</li> </ul>	<ul style="list-style-type: none"> <li>Remove the write-protection. (Peel off the write-protect sticker.)</li> </ul>
I cannot erase all the frames.	<ul style="list-style-type: none"> <li>The frame is protected.</li> </ul>	<ul style="list-style-type: none"> <li>Remove the frame protection.</li> </ul>

## Troubleshooting

Problem	Cause	Remedy
Nothing happens when I use the camera buttons and dial.	<ul style="list-style-type: none"> <li>• Camera malfunction.</li> <li>• The Mode dial has been moved to another setting.</li> <li>• The battery exhausted.</li> </ul>	<ul style="list-style-type: none"> <li>• Use the "POWER" switch to switch the camera on again.</li> <li>• Remove the battery, re-insert them and try again.</li> <li>• Load a new battery.</li> </ul>
No image appears when I press the "DISP" button.	<ul style="list-style-type: none"> <li>• The Mode dial has been moved to another setting.</li> </ul>	<ul style="list-style-type: none"> <li>• Set the Mode dial to the correct setting.</li> </ul>
There is no sound.	<ul style="list-style-type: none"> <li>• The camera volume is set too low.</li> <li>• The microphone was covered during recording.</li> <li>• The A/V cable is connected.</li> </ul>	<ul style="list-style-type: none"> <li>• Adjust the volume.</li> <li>• Take care not to cover the microphone when recording.</li> <li>• Disconnect the A/V cable.</li> </ul>
There is no picture or sound on the TV.	<ul style="list-style-type: none"> <li>• The A/V cable is connected during movie playback.</li> <li>• The camera and TV are connected incorrectly.</li> <li>• The TV input is set to "TV".</li> <li>• The volume on the TV is set too low.</li> </ul>	<ul style="list-style-type: none"> <li>• Connect the A/V cable correctly.</li> <li>• Connect the TV and camera correctly.</li> <li>• Set the TV input to "Video".</li> <li>• Adjust the volume.</li> </ul>

## Specifications

### System

- Model: Digital camera FinePix40i
- Image file Size: 2400 × 1800 pixels/1280 × 960 pixels/640 × 480 pixels
- CCD Sensor  
1/1.7-inch Super CCD (with primary color filter), 2.4 million pixels in an interwoven pattern
- File format  
Still image: Design rule for Camera File system-compliant (Exif ver.2.1 JPEG-compliant), DPOF-compatible  
Movie: Design rule for Camera File system-compliant (AVI format, Motion JPEG)
- Number of standard shots/recording time for SmartMedia

- Storage media: SmartMedia (3.3V)
- Viewfinder: Real image optical
- Lens: Super EBC Fujinon
- Focus distance: f = 8.3 mm (equivalent to 36 mm on a 35 mm camera)
- Exposure control: 64 zones TTL metering, Program AE (exposure compensation available in Manual mode)
- Sensitivity: Equivalent to ISO 200
- White balance  
Auto-selected (7 modes selectable in Manual mode)
- Focal range  
Normal: Approx. 50 cm/1.6 ft. to infinity  
Macro : Approx. 6 cm/2.3 in. to 50 cm/1.6 ft.

\* This shows the number of available shots or recording time for a formatted SmartMedia.

File Size	2400 × 1800			1280 × 960		640 × 480	Movie	Audio (only for SmartMedia with ID)		
	FINE	NORMAL	BASIC	FINE	NORMAL	NORMAL		128 kbps	112 kbps	96 kbps
Image Data Size	Approx. 1700KB	Approx. 803KB	Approx. 328KB	Approx. 612KB	Approx. 312KB	Approx. 87KB	—	—	—	—
MG-4S(4MB)	2	4	11	6	12	44	22 sec.	—	—	—
MG-8S(8MB)	4	9	23	12	24	89	45 sec.	—	—	—
MG-16S/SW (16MB)	9	19	47	25	49	165	90 sec.	15 min.	18 min.	20 min.
MG-32S/SW (32MB)	18	38	94	50	99	331	182 sec.	30 min.	35 min.	40 min.
MG-64S/SW (64MB)	36	77	189	101	198	663	364 sec.	60 min.	70 min.	80 min.

## Specifications

- Electronic shutter  
Variable-speed, 1/4 to 1/1000 sec. (using AE)
- Flash: Auto flash using flash control sensor  
Effective range: Approx. 0.4 m ~ 2.5 m (1.3 ft. ~ 8.2 ft.)  
Flash modes : Auto, Red-Eye Reduction, Forced Flash, Suppressed Flash, Slow Synchro
- LCD monitor  
1.8-inch, D-TFD 110000 pixels
- Video output  
NTSC (US/Canada model)/PAL (Europe model)
- Self-Timer: 10 sec. timer clock

### Input/Output Terminals

- A/V Output  
Stereo mini- jack (1), Audio: 316mVrms, output impedance 2.2 K $\Omega$  or less
- Digital (USB)  
USB (1) for image data output with a personal computer
- DC Input  
Socket for specified AC power adapter
- Remote control socket: Special remote control jack
- Headphone socket (remote control): Stereo, mini-jack (dia. 3.5 mm/0.14 in.)

### Audio Components

- Recording media: SmartMedia with ID (3.3 V)
- Audio format: MP3
- Copyright protection method: InfoBind
- Continuous playback time:  
Approx. 150 minutes (using 2AA Ni-MH batteries-1600 mAh)  
Approx. 80 minutes (using 2AA Ni-Cd batteries)
- Bass boost: 2 levels
- Playback modes: Normal, Repeat All, Repeat Track
- Output: 5 mW  $\times$  2

### Power Supply and Others

- Power supply  
Use one of the following:
  - 2AA-size Ni-MH (nickel metal hydride) batteries (included)
  - 2AA-size long-life (Minimum 1,000mAh) Ni-Cd (nickel-cadmium) batteries (sold separately)
  - AC-3V AC Power Adapter (sold separately)
- No. of available shots using battery (battery life)  
\* with fully charged batteries

Battery Type	LCD monitor on	LCD monitor off
Ni-MH battery HR-3UF	Approx. 80	Approx. 230
Ni-Cd battery KR-3UF	Approx. 50	Approx. 140

This indicates the number of available frames shot consecutively at room temperature with a flash use rate of 50%. Note that these figures may vary depending on the ambient temperature and the amount of charge in the battery.

- Battery life for alkaline batteries  
Alkaline batteries should only be used in an emergency. The LCD monitor cannot be turned on.

Battery Type	Number of available shots*	Available audio playback time
DURACELL ULTRA	Approx. 70	Approx. 100 minutes
Energizer	Approx. 30	Approx. 100 minutes

\* LCD monitor off

- Conditions for use  
Temperature: 0°C to + 40°C (+ 32°F to + 104°F); 80% humidity or less (no condensation)
- Camera dimensions (W/H/D)  
85.5 mm  $\times$  71.0 mm  $\times$  28.5 mm/3.4 in.  $\times$  2.8 in.  $\times$  1.1 in. (not including accessories and attachments)
- Camera mass (weight)  
Approx. 155g/5.5 oz. (not including accessories, batteries or SmartMedia)
- Mass (Weight) for photography  
Approx. 210g/7.4 oz. (including batteries and SmartMedia)

- Accessories: See P.7
- Optional Accessories: See P.92 - 94



\* These specifications are subject to change without notice.  
\* The LCD monitor on your digital camera is manufactured using advanced high-precision technology. Even so, small bright points and anomalous colors (particularly around text) may appear on the monitor. These are normal display characteristics and do not indicate a fault with the monitor. This phenomenon will not appear on the recorded image.

# Safety Notes




- To ensure that you use your FinePix40i camera correctly, read these Safety Notes and your Owner's Manual carefully beforehand.
- After reading these Safety Notes, store them in a safe place.




## About the Icons


The icons shown below are used in this document to indicate the severity of the injury or damage that can result if the information indicated by the icon is ignored and the product is used incorrectly as a result.





 <b>WARNING</b>	<b>This icon indicates that death or serious injury can result if the information is ignored.</b>
 <b>CAUTION</b>	<b>This icon indicates that personal injury or material damage can result if the information is ignored.</b>

The icons shown below are used to indicate the nature of the information which is to be observed.

-  Triangular icons notify the user of information requiring attention ("Important").
-  Circular icons with a diagonal bar notify the user that the action indicated is prohibited ("Prohibited").
-  Filled circles with an exclamation mark notify the user of an action that must be performed ("Required").





 <b>WARNING</b>	
<b>When a fault arises, switch the camera off and then remove the batteries and disconnect the AC power adapter.</b>	 Unplug from power socket.
Continued use of the camera when it is emitting smoke, is emitting any unusual odor, or is in any other abnormal state can cause a fire or electric shock. ● Contact your Fuji dealer.	
<b>Do not allow water or foreign objects to enter the camera.</b>	
If water or a foreign object has entered the camera, switch the camera off and then remove the batteries and disconnect the AC power adapter. Continued use of the camera can cause a fire or electric shock. ● Contact your Fuji dealer.	
<b>Do not place the camera on an unstable surface.</b>	
This can cause the camera to fall or tip over and cause injury.	







 <b>WARNING</b>	
<b>Never attempt to modify or disassemble the camera. (Never open the casing.)</b>	 Do not disassemble.
Do not use the camera when it has been dropped or the casing is damaged. This can cause a fire or electric shock. ● Contact your Fuji dealer.	
<b>Do not use the camera in the bathroom or shower.</b>	 Do not use in the bathroom or shower.
This can cause a fire or electric shock.	
<b>Do not use the audio functions while moving.</b>	
Do not use the camera while you are walking or operating a moving car or other vehicle. This can result in you falling down or being involved in a traffic accident.	
<b>Do not touch any metal parts of the camera during a thunderstorm.</b>	
Do not attempt to record or play back audio while you are walking or in control of a vehicle such as a car. This could cause you to fall over or have a traffic accident.	

 <b>WARNING</b>	
<b>Do not use the batteries except as specified.</b>	
Load the batteries with the poles positioned as indicated by the ⊕ and ⊖ marks.	
<b>Do not heat, modify or attempt to disassemble the batteries. Do not drop or subject the batteries to impacts. Do not attempt to recharge lithium or alkaline batteries. Do not store the batteries with metallic products.</b>	
Any of these actions can cause the batteries to burst or leak and cause fire or injury as a result.	
<b>Use only the batteries or AC power adapter specified for use with this camera.</b>	
The use of other power sources can cause a fire.	



## Safety Notes

 <b>CAUTION</b>	
<p><b>Do not use this camera in locations severely affected by oil fumes, steam, humidity or dust.</b> This can cause a fire or electric shock.</p>	
<p><b>Do not leave this camera in places subject to extremely high temperatures.</b> Do not leave the camera in locations such as a sealed vehicle or in direct sunlight. This can cause a fire.</p>	
<p><b>Do not place heavy objects on the camera.</b> This can cause the heavy object to tip over or fall and cause injury.</p>	
<p><b>Do not move the camera while the AC power adapter is still connected.</b> This can damage the power cord or cables and cause a fire or electric shock.</p>	

 <b>CAUTION</b>	
<p><b>Do not cover or wrap the camera or the AC power adapter in a cloth or quilt.</b> This can cause heat to build up and distort the casing or cause a fire.</p>	
<p><b>Remove the batteries and disconnect the AC power adapter when you are cleaning the camera or if you intend to leave the camera unused for a long period.</b> Failure to do so can cause a fire or electric shock.</p>	
<p><b>Do not use the flash close to anyone's eyes.</b> This can cause temporary damage to the person's eyesight.</p>	
<p><b>Request regular internal testing and cleaning for your camera.</b> Build-ups of dust in your camera can cause a fire or electric shock. ●Contact your Fuji dealer to request internal cleaning every 2 years.</p>	
<p><b>Do not listen to audio at high volumes for long periods and do not set the audio volume to high at the outset.</b> This could cause impaired hearing.</p>	

## EC Declaration of Conformity

We  
Name : Fuji Photo Film (Europe) G.m.b.H.  
Address : Heesenstrasse 31  
40549 Dusseldorf, Germany

declare that the product  
Product Name : FUJIFILM DIGITAL CAMERA FinePix40i  
Manufacturer's Name : Fuji Photo Film Co., Ltd.  
Manufacturer's Address : 26-30, Nishiazabu 2-chome, Minato-ku,  
Tokyo 106-8620, Japan

is in conformity with the following Standards

Safety : EN60065 :  
EMC : EN55022 : 1998 Class B  
EN55024 : 1998  
EN61000-3-2 : 1995 + A1: 1998 + A2: 1998

following the provision of the EMC Directive (89/336/EEC, 92/31/EEC and 93/68/EEC) and Low Voltage Directive (73/23/EEC).



Dusseldorf, Germany

July 1, 2000

Place

Date

Signature/Managing Director



Bij dit produkt zijn batterijen geleverd. Wanneer deze leeg zijn, moet u ze niet weggooien maar inleveren als KCA



---

**FUJI PHOTO FILM CO., LTD.**

26-30, Nishiazabu 2-chome, Minato-ku, Tokyo 106-8620, Japan

Printed in Japan

Printed on recycled paper.

FGS-002107-FG